

STATE EDUCATIONAL PROFILE

As of March 2013, Karnataka had 60036 elementary schools with 313008 teachers and 8.39 million students, and 14195 secondary schools with 114350 teachers and 2.09 million students. [http://en.wikipedia.org/wiki/Karnataka - cite note-school-99](http://en.wikipedia.org/wiki/Karnataka_-_cite_note-school-99) There are three kinds of schools in the state, viz., government-run, private aided (financial aid is provided by the government) and private unaided (no financial aid is provided). The primary languages of instruction in most schools are Kannada apart from English, Urdu and Other languages. The syllabus taught in the schools is by and large the state syllabus (SSLC) defined by the Department of Public Instruction of the Government of Karnataka, and the CBSE, ICSE in case of certain private unaided and KV schools. In order to provide supplementary nutrition and maximize attendance in schools, the Karnataka Government has launched a mid-day meal scheme in government and aided schools in which free lunch is provided to the students. A pair of uniforms and all text books is given to children; free bicycles are given to 8th standard children. Statewide board examinations are conducted at the end of the period of X standard and students who qualify are allowed to pursue a two-year pre-university course; after which students become eligible to pursue under-graduate degrees. There are two separate Boards of Examination for class X and class XII.

There are 652 degree colleges (March 2011) affiliated with one of the universities in the state, viz. Bangalore University, Gulbarga University, Karnataka University, Kuvempu University, Mangalore University and University of Mysore. In 1998, the engineering colleges in the state were brought under the newly-formed Visvesvaraya Technological University headquartered at Belgaum, whereas the medical colleges are run under the jurisdiction of the Rajiv Gandhi University of Health Sciences. Some of these baccalaureate colleges are accredited with the status of a deemed university. There are 187 engineering, 289 Polytechnic, 39 medical and 44 dental colleges in the state. Udupi, Sringeri, Gokarna and Melkote are well-known places of Sanskrit and Vedic learning. There is a women's university as well as a kannada University in the state, apart from 3 agricultural universities. A veterinary university has been set up during 2009-10.

30 Revenue Districts of the State are recomposed in 34 educational districts. The thirty districts of the state are grouped into four

Educational Divisions with headquarters at Bangalore, Belgaum, Gulbarga and Mysore. Besides two divisions – Belgaum and Gulbarga divisions are having Additional Commissionerates for streamlining of administration.

Division	Districts
Bangalore	Bangalore, Bangalore (R), Ramanagar, Chitradurga, Kolar, Chikkaballapur, Shimoga, Tumkur and Davanagere. [09]
Belgaum	Belgaum, Bijapur, Bangalkot, Dharwad, Gadag, Haveri, and Uttara Kannada [07]
Gulbarga	Bellary, Bidar, Gulbarga, Raichur and Koppal, Yadgir [06]
Mysore	Chikmagalur, Dakshina Kannada, Udipi, Hassan, Kodagu, Mandya, Mysore and Chamarajanagar [08]

Schools

- Elementary Education is provided in the State, viz, LPS with 1 to 5 standards, HPS with 1 to 7 standards and 1 to 8 standards, which also have 1 to 5 LPS attached to them. At the HPS stage, there are schools offering 6 and 7 standards as well as 6 to 8 standards only. In addition, 8th standard facility is provided to children in the high schools of the State for **all children** who complete the HPS in 1 to 7 and 6 to 7 standards.
- There is a separate State Based for 1 to 10 schools. There are 60036 schools with State Board. 25950 Government sector schools provide elementary schooling at 1 to 5 LPS stage only, and 34086 Government sector schools are at the HPS stage, which include LPS sections.
- When a count is taken of schools managed by the Department of Education (including those which are begun under SSA patronage), the schools of the Department of Social Welfare, schools run by Local Self Government Institutions, schools under government patronage for grant-in-aid (the private aided schools) which are all government and government aided schools. (Leaving out KGBV and CWSN schools), it is observed that there is a decrease/increase of **393** schools in the State. The increase in the private unaided **sector** is **972** schools. The decrease in State sector schools from 2011-12 to 2012-13 is around **0.69** percent while the increase is **6.27** percent in case of private unaided schools.

[Source: State Analytical Report 2011-12 of U-DISE data and U-DISE data of 2012-13].

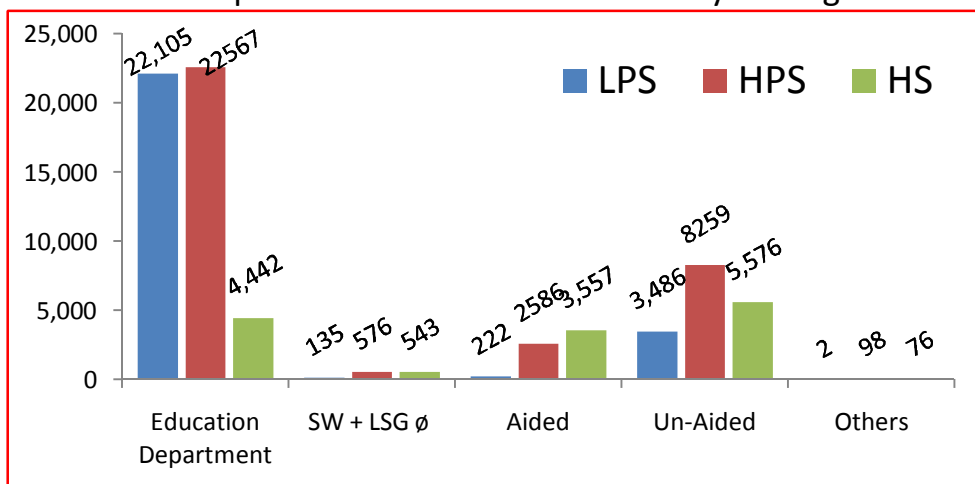
Management wise Schools, 2012-13

Category	Education Department	Social Welfare	Local Body	Aided	Unaided	Central Schools	Other Schools	Total
Primary Schools	22105	132	03	222	3486	02	00	25950
Upper Primary Schools	22567	553	23	2586	8259	78	20	34086
High Schools	4442	500	43	3557	5576	71	5	14195

Source : DISE 2012-13

Graph 1

- Comparison of Number of Schools by Managements

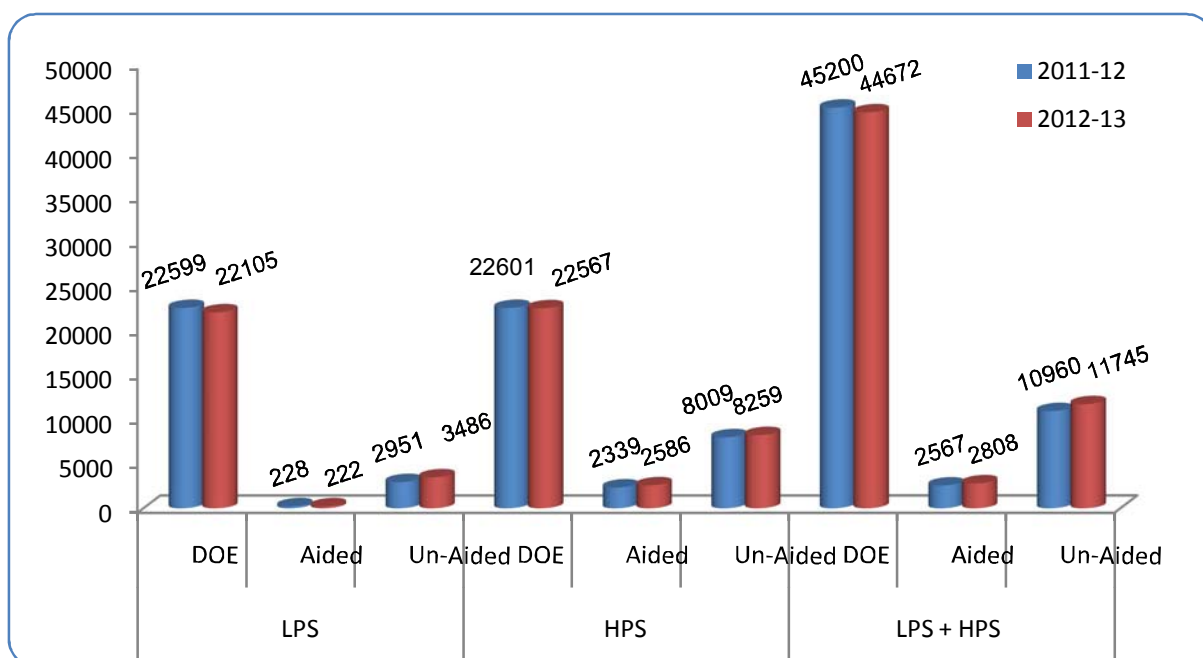


- There are 60036 elementary schools in the State under diverse managements. 44672 schools, 72.32 percent, out of them are either managed or supported by government. 37170 schools, 62.41 percent are exclusively and directly managed by the government. Participation of the private unaided sector is higher at the higher primary stage within the elementary cycle.
- There is a net increase of 499 elementary schools (DoE) in the State during 2012-13 as compared to the figure of 2011-12. While 130 LPS of 2010-11 were upgraded (State-sector), there is a gross increase of 302 UPS from the previous year of which 130 are in upgraded category. The real increase of HPS is 172 schools.

- Location of LPS and HPS in the villages/urban areas is under diverse organizational structures. There are independent LPS schools in small habitations. LPS are also functioning and attached with HPS and high schools. This is true of HPS schools are also. Aided / Un-aided Madarasa are not counted among schools.

★ **Highlights of schools 2012-13 Vs 2011-12**

Year	LPS			HPS			LPS + HPS		
	DOE	Aided	Un-Aided	DOE	Aided	Un-Aided	DOE	Aided	Un-Aided
2011-12	22599	228	2951	22601	2339	8009	45200	2567	10960
2012-13	22105	222	3486	22567	2586	8259	44672	2808	11745
+ or -	- 494	-06	+535	-34	247	250	-528	241	785



★ Notes :-

- Significant Increase in Pvt. Un-aided schools at LPS stage.
- Significant Increase in Aided schools at HPS stage.
- 528 'LPS + HPS' decreased under DoE (494 at LPS stage). Incidentally 697 schools are Zero Enrolment schools
- There is an increase of 814 schools in the State. This increase is accounted by growth of private unaided schools (+785) and Aided schools (+332). There is a decrease (-523) of schools of the DoE.

- Decrease of schools in the DoE is mainly at the LPS stage. They were small schools. It is noted that there are 8154 LPS schools in the State with student strength of less than 20 students per school. They deserve to be merged with medium-sized schools in the interests of children. Age-adjusted corporate life, peer-learning and adjustments, balanced social / emotional development will be possible only with sufficiently adequate number of children in each grade [20 to 25 children]

DISTRICT - WISE SCHOOLS

Sl. No	District	Education Department		Social Welfare		Local Body		Aided		Un Aided		Central		Others		Total		
		LPS	HPS	LPS	HPS	LPS	HPS	LPS	HPS	LPS	HPS	LPS	HPS	LPS	HPS	LPS	HPS	Total
1	BANGALORE RURAL	681	439	1	4	0	0	0	12	31	167	0	1	0	1	713	624	1337
2	BANGALORE URBAN	679	711	3	5	2	12	41	369	324	2246	0	12	0	16	1049	3371	4420
4	CHIKKABALLAPURA	974	535	4	13	0	0	1	40	34	199	0	1	0	0	1013	788	1801
5	CHITRADURGA	819	866	3	20	0	0	3	77	65	152	0	1	0	0	890	1116	2006
6	DAVANAGERE	650	704	3	18	0	0	10	137	135	236	0	2	0	0	798	1097	1895
7	KOLAR	1235	630	1	15	0	0	2	41	33	237	0	2	0	1	1271	926	2197
8	RAMANAGARA	885	449	5	20	0	0	1	23	30	135	0	0	0	0	921	627	1548
9	SHIMOGA	946	936	5	17	0	0	3	83	78	236	0	2	0	0	1032	1274	2306
10	TUMKUR	2091	1319	5	28	0	0	4	59	83	282	0	2	0	0	2183	1690	3873
BANGALORE Division Total :		8960	6589	30	140	2	12	65	841	813	3890	0	23	0	18	9870	11513	21383
12	BAGALKOT	489	823	3	16	0	0	12	84	131	184	0	2	0	0	635	1109	1744
13	BELGAUM	1383	1871	7	37	0	2	13	207	279	470	0	7	0	0	1682	2594	4276
15	BIJAPUR	831	1051	2	15	0	0	28	94	398	244	0	3	0	0	1259	1407	2666
16	DHARWAD	223	545	1	10	1	2	8	79	89	185	0	5	0	0	322	826	1148
17	GADAG	178	438	3	10	0	2	5	43	73	95	0	2	0	1	259	591	850
18	HAVERI	458	705	9	18	0	1	2	46	96	134	0	1	0	0	565	905	1470
19	UTTARA KANNADA	1124	996	3	12	0	0	5	35	28	96	0	4	0	0	1160	1143	2303
BELGAUM Division Total :		4686	6429	28	118	1	7	73	588	1094	1408	0	24	0	1	5882	8575	14457
21	BELLARY	523	835	2	29	0	0	3	68	239	253	0	4	0	0	767	1189	1956
22	BIDAR	537	731	1	16	0	1	7	181	219	302	0	2	0	0	764	1233	1997
23	GULBARGA	799	1003	4	30	0	0	14	153	319	408	2	2	0	0	1138	1596	2734
24	KOPPAL	394	571	3	17	0	0	2	14	100	173	0	2	0	0	499	777	1276
25	RAICHUR	706	781	11	23	0	0	5	37	173	227	0	2	0	0	895	1070	1965
26	YADAGIRI	464	469	1	15	0	0	3	26	137	77	0	0	0	0	605	587	1192
GULBARGA Division Total :		3423	4390	22	130	0	1	34	479	1187	1440	2	12	0	0	4668	6452	11120
27	CHAMARAJANAGARA	351	412	19	13	0	0	7	33	42	85	0	2	0	0	419	545	964
28	CHIKKAMANGALORE	748	682	14	21	0	0	1	26	50	138	0	2	0	0	813	869	1682
29	DAKSHINA KANNADA	276	653	9	14	0	0	14	210	51	226	0	3	0	0	350	1106	1456
30	HASSAN	1390	998	4	27	0	0	2	46	62	233	0	2	0	0	1458	1306	2764
31	KODAGU	140	263	2	16	0	3	1	10	14	84	0	3	0	1	157	380	537
32	MANDYA	917	827	2	24	0	0	3	35	54	232	0	1	0	0	976	1119	2095
33	MYSORE	965	961	0	45	0	0	8	114	110	407	0	5	0	0	1083	1532	2615
34	UDUPI	249	363	2	5	0	0	14	204	9	116	0	1	0	0	274	689	963
MYSORE Division Total :		5036	5159	52	165	0	3	50	678	392	1521	0	19	0	1	5530	7546	13076
State Total :		22105	22567	132	553	3	23	222	2586	3486	8259	2	78	0	20	25950	34086	60036

Management increases / decreases in number of schools and their percentages from 2006-07 to 2012-13

Year	Management	LPS	HPS	Total	HS	Grand Total
2006-07	DOE	24547	19807	44354	3452	47806
	AIDED	326	2173	2499	2633	5132
	UNAIDED	3243	5468	8711	4133	12844
2007 – 08	DOE	24,877	19,972	44,849	4,138	48,987
	AIDED	280	2,128	2,408	2,820	5,228
	UNAIDED	3,361	5,050	8,411	4,567	12,978
2008 – 09	DOE	23,500	21,976	45,476	4,142	49,618
	AIDED	272	2,177	2,449	2,997	5,446
	UNAIDED	2,653	6,217	8,870	4,245	13,115
2009 – 10	DOE	23370	22278	45648	4168	49,816
	AIDED	258	2343	2601	3273	5874
	UNAIDED	2435	6842	9277	4579	13,856
2010-11	DOE	23109	22568	45677	4278	49955
	AIDED	239	2418	2657	3367	6024
	UNAIDED	2761	7491	10252	5259	15511
2011-12	DOE	22,599	22,601	45,200	4,437	49,637
	AIDED	228	2,339	2,567	3,335	5,902
	UNAIDED	2,951	8,009	10,960	5,523	16,483
2012-13	DOE	22,105	22,567	44,672	4,442	49,114
	AIDED	222	2,586	2,808	3,557	6,365
	UNAIDED	3,486	8,259	11,745	5,576	17,321
Diff. Incr. / Decr. 2006-07 to 2011-12	DOE	-2,442	2,760	318	990	-1,308
	AIDED	-104	413	309	924	-1,233
	UNAIDED	243	2,791	3,034	1,443	-4,477
Percentage Incr / Decr (2006-07 to 2012- 13)	DOE	-10	14	1	29	-3
	AIDED	-32	19	12	35	-24
	UNAIDED	7	51	35	35	-35

Source: DISE 2006-07, 2007-08, 2008-09, 2009-10 , 2010-11, 2011-12 and 2012-13

Size of Enrolments:-

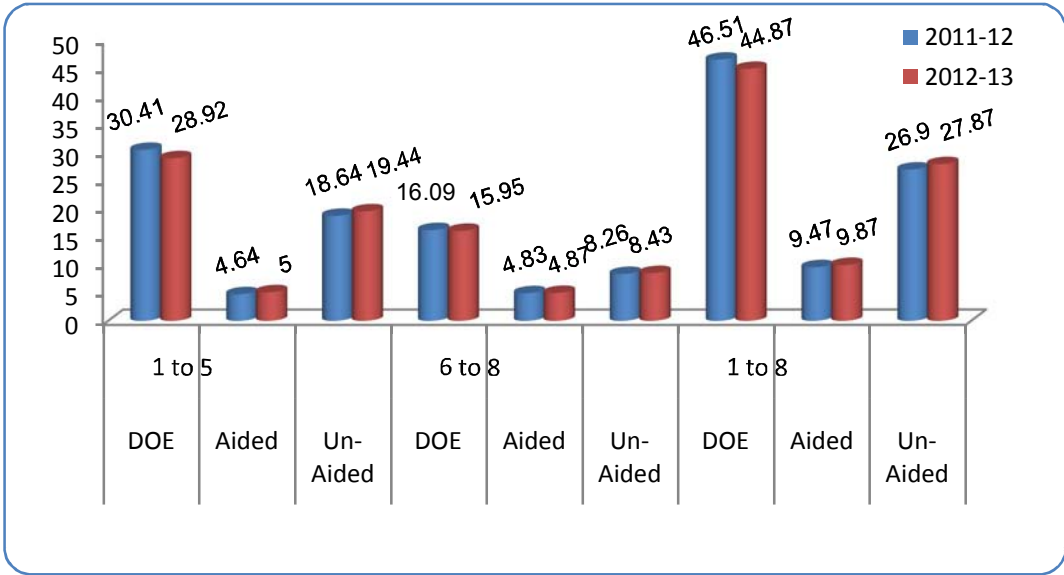
There are 8395589 children in 1 to 8 standards studying in 60036 schools of the State under all managements. 5378481 children are in 1 to 5 standards while 3017108 children are in 6 to 8 standards. There are 4357503 boys as compared to 4038086 girls in these 8.39 million children. Proportion of boys to girls is 51.90 to 48.10 percent. It cannot be 50:50 as there is an imbalance in sex-ratios everywhere. In Karnataka, it is 965; that is 965 women for every 1000 men.

Proportion of children in the schools funded by the Department of Education to total enrolments is 69 percent. Further it is to be noted that outside the Department of Education, in the State sector, there is enrolment in schools of the Department of Social Welfare, the Local Self Government, Institutions and the KGBV schools.

Table of Differences in Enrolments across standards and stages, 2011-12 and 2012-13, Standards and Stages

Standards	1	2	3	4	5	1 to 5	6	7	8	6 to 8	1 to 8
2011-12 Enrolments	1119422	1082346	1052868	1068443	1091463	5414542	1050180	1025318	931177	3006675	8421217
2012-13 Enrolments	1147526	1080838	1058243	1040867	1051007	5378481	1032695	1016186	968227	3017108	8395589
Diff.	28104	-1508	5375	-27576	-40456	-36061	-17485	-9132	37050	10433	-25628

There is a overall decrease of 25628 students in elementary education in the State. There is a marginal and insignificant loss of 36061 students at LPS, 1 to 5 stages, while there is a gain of 10433 students at HPS, 6 to 8 standards. Highest gain is at 1st standard. There is a transition loss of 27478 students from 7th to 8th standards. 2nd, 5th, 6th and 7th standards have shown an appreciation of enrolments during 2012-13, as compared to that in 2011-12. 2nd, 4th, 5th, 6th and 7th standards have revealed a loss. Lowest loss is at second standard, the loss being 1508 students.



Enrolment Primary: All Management:

Enrolment Primary: All Management:						
Enrolment (Primary)				% Increase/decrease		
Year	Boys	Girls	Total	Boys	Girls	Total
2012-13	27,90,256	25,88,225	53,78,481	-0.65	-0.81	-0.73
2011-12	28,08,432	26,09,406	54,17,838	0.25	-0.14	0.06
2010-11	28,01,529	26,13,045	54,14,574	-0.67	-1.00	-0.83
2009-10	28,20,488	26,39,555	54,60,043	-1.38	-1.60	-1.49
2008-09	28,59,996	26,82,420	55,42,416	-0.89	-1.05	-0.97
2007-08	28,85,736	27,10,964	55,96,700			
Enrolment Primary: Govt. Schools						
Enrolment (Primary)				% Increase/decrease		
Year	Boys	Girls	Total	Boys	Girls	Total
2012-13	14,35,122	14,75,143	29,10,265	-5.17	-3.46	-4.31
2011-12	15,13,439	15,28,008	30,41,447	-4.14	-4.04	-4.09
2010-11	15,78,851	15,92,388	31,71,239	-5.48	-4.88	-5.18
2009-10	16,70,458	16,74,005	33,44,463	-6.44	-5.77	-6.11
2008-09	17,85,433	17,76,596	35,62,029	-5.11	-4.74	-4.93
2007-08	18,81,513	18,65,057	37,46,570			

District wise Enrolment at Primary Level

All Management Enrolment – Primary level (Class 1 - 5)										
Sln0	District	2011-12			2012-13			Percentage of Increase		
		Boys	Girls	Total	Boys	Girls	Total	Boys	Girls	Total
1	2	3	4	5	6	7	8	9	10	11
1	BAGALKOT	1,06,427	98,571	2,04,998	1,06,543	98,242	2,04,785	0.11	-0.33	-0.10
2	BANGALORE RURAL	37,724	35,530	73,254	37,976	36,040	74,016	0.67	1.44	1.04
3	BANGALORE URBAN	3,65,585	3,46,228	7,11,813	3,93,247	3,70,629	7,63,876	7.57	7.05	7.31
4	BELGAUM	2,34,949	2,14,773	4,49,722	2,33,921	2,14,240	4,48,161	-0.44	-0.25	-0.35
5	BELLARY	1,29,348	1,21,104	2,50,452	1,30,618	1,21,291	2,51,909	0.98	0.15	0.58
6	BIDAR	1,19,828	1,09,665	2,29,493	1,15,282	1,06,017	2,21,299	-3.79	-3.33	-3.57
7	BIJAPUR	1,47,979	1,30,972	2,78,951	1,49,137	1,30,703	2,79,840	0.78	-0.21	0.32
8	CHAMARAJANAGARA	36,928	34,869	71,797	36,968	34,672	71,640	0.11	-0.56	-0.22
9	CHICKBALLAPUR	52,679	49,065	1,01,744	51,639	47,149	98,788	-1.97	-3.91	-2.91
10	CHIKKAMANGALORE	41,750	39,294	81,044	40,654	38,271	78,925	-2.63	-2.60	-2.61
11	CHITRADURGA	71,750	66,421	1,38,171	69,659	65,090	1,34,749	-2.91	-2.00	-2.48
12	DAKSHINA KANNADA	83,669	78,639	1,62,308	82,022	76,704	1,58,726	-1.97	-2.46	-2.21
13	DAVANAGERE	90,935	85,238	1,76,173	88,609	82,769	1,71,378	-2.56	-2.90	-2.72
14	DHARWAD	87,876	83,708	1,71,584	82,137	77,823	1,59,960	-6.53	-7.03	-6.77
15	GADAG	52,341	49,027	1,01,368	51,479	48,373	99,852	-1.65	-1.33	-1.50
16	GULBARGA	1,65,161	1,51,300	3,16,461	1,62,063	1,46,026	3,08,089	-1.88	-3.49	-2.65
17	HASSAN	62,982	59,818	1,22,800	60,971	58,061	1,19,032	-3.19	-2.94	-3.07
18	HAVERI	75,158	70,440	1,45,598	74,032	69,880	1,43,912	-1.50	-0.80	-1.16
19	KODAGU	22,369	21,293	43,662	21,322	20,605	41,927	-4.68	-3.23	-3.97
20	KOLAR	64,330	61,084	1,25,414	62,555	59,936	1,22,491	-2.76	-1.88	-2.33
21	KOPPAL	77,705	71,968	1,49,673	74,334	69,101	1,43,435	-4.34	-3.98	-4.17
22	MANDYA	64,544	59,096	1,23,640	61,405	56,657	1,18,062	-4.86	-4.13	-4.51
23	MYSORE	1,18,864	1,12,408	2,31,272	1,14,696	1,08,122	2,22,818	-3.51	-3.81	-3.66
24	RAICHUR	1,11,689	1,02,642	2,14,331	1,12,447	1,03,355	2,15,802	0.68	0.69	0.69
25	RAMANAGARA	38,938	36,308	75,246	38,320	35,861	74,181	-1.59	-1.23	-1.42
26	SHIMOGA	72,238	68,589	1,40,827	70,652	66,448	1,37,100	-2.20	-3.12	-2.65
27	TUMKUR	1,01,178	93,509	1,94,687	98,255	91,207	1,89,462	-2.89	-2.46	-2.68
28	UDUPI	40,767	38,444	79,211	39,826	37,662	77,488	-2.31	-2.03	-2.18
29	UTTARA KANNADA	57,834	54,175	1,12,009	56,444	52,713	1,09,157	-2.40	-2.70	-2.55
30	YADGIRI	74,907	65,228	1,40,135	73,043	64,578	1,37,621	-2.49	-1.00	-1.79
	Total	28,08,432	26,09,406	54,17,838	27,90,256	25,88,225	53,78,481	-0.65	-0.81	-0.73

Enrolment Upper Primary: All Management:						
Enrolment (Upper Primary)				% Increase/decrease		
Year	Boys	Girls	Total	Boys	Girls	Total
2012-13	15,67,247	14,49,861	30,17,108	0.52	0.13	0.34
2011-12	15,59,068	14,47,951	30,07,019	1.44	1.21	1.33
2010-11	15,36,864	14,30,580	29,67,444	0.54	0.99	0.76
2009-10	15,28,585	14,16,574	29,45,159	-1.43	-1.71	-1.56
2008-09	15,50,766	14,41,210	29,91,976	-0.25	-0.02	-0.14
2007-08	15,54,686	14,41,561	29,96,247			
Enrolment Upper Primary: Education Department Schools						
Enrolment (Upper Primary)				% Increase/decrease		
Year	Boys	Girls	Total	Boys	Girls	Total
2012-13	7,95,552	7,99,542	15,95,094	-1.14	-0.70	-0.92
2011-12	8,04,699	8,05,187	16,09,886	-2.11	-1.86	-1.99
2010-11	8,22,069	8,20,440	16,42,509	-3.23	-2.56	-2.90
2009-10	8,49,490	8,42,012	16,91,502	-6.38	-5.82	-6.10
2008-09	9,07,403	8,94,034	18,01,437	-4.50	-4.28	-4.39
2007-08	9,50,170	9,34,032	18,84,202			

District wise Enrolment at Upper Primary Level

All Management Enrolment – Upper Primary level (Class 6 - 8)										
Sl no	District	2011-12			2012-13			Percentage of Increase		
		Boys	Girls	Total	Boys	Girls	Total	Boys	Girls	Total
1	2	3	4	5	6	7	8	9	10	11
1	BAGALKOT	52,731	48,825	1,01,556	54,607	50,820	1,05,427	3.56	4.09	3.81
2	BANGALORE RURAL	23,074	21,940	45,014	22,536	21,297	43,833	-2.33	-2.93	-2.62
3	BANGALORE URBAN	1,98,742	1,90,807	3,89,549	2,06,858	1,94,957	4,01,815	4.08	2.17	3.15
4	BELGAUM	1,32,767	1,21,095	2,53,862	1,33,961	1,21,614	2,55,575	0.90	0.43	0.67
5	BELLARY	62,927	57,181	1,20,108	65,246	59,294	1,24,540	3.69	3.70	3.69
6	BIDAR	55,438	53,025	1,08,463	54,480	51,932	1,06,412	-1.73	-2.06	-1.89
7	BIJAPUR	67,419	58,952	1,26,371	68,816	60,642	1,29,458	2.07	2.87	2.44
8	CHAMARAJANAGARA	23,164	22,016	45,180	23,175	21,720	44,895	0.05	-1.34	-0.63
9	CHICKBALLAPUR	32,105	30,816	62,921	31,224	29,360	60,584	-2.74	-4.72	-3.71
10	CHIKKAMANGALORE	28,105	26,694	54,799	27,685	25,691	53,376	-1.49	-3.76	-2.60
11	CHITRADURGA	43,494	40,970	84,464	42,985	40,040	83,025	-1.17	-2.27	-1.70
12	DAKSHINA KANNADA	55,568	51,427	1,06,995	55,316	51,515	1,06,831	-0.45	0.17	-0.15
13	DAVANAGERE	51,511	47,809	99,320	52,250	48,607	1,00,857	1.43	1.67	1.55
14	DHARWAD	52,030	49,835	1,01,865	49,502	46,438	95,940	-4.86	-6.82	-5.82
15	GADAG	28,991	27,334	56,325	30,515	28,421	58,936	5.26	3.98	4.64

16	GULBARGA	75,817	69,448	1,45,265	75,834	69,281	1,45,115	0.02	-0.24	-0.10
17	HASSAN	41,490	40,304	81,794	40,590	39,204	79,794	-2.17	-2.73	-2.45
18	HAVERI	42,159	40,547	82,706	42,290	40,851	83,141	0.31	0.75	0.53
19	KODAGU	14,720	13,912	28,632	14,525	13,498	28,023	-1.32	-2.98	-2.13
20	KOLAR	38,545	37,284	75,829	37,872	36,409	74,281	-1.75	-2.35	-2.04
21	KOPPAL	39,222	35,253	74,475	39,636	36,012	75,648	1.06	2.15	1.58
22	MANDYA	40,637	37,604	78,241	40,343	37,031	77,374	-0.72	-1.52	-1.11
23	MYSORE	75,121	72,000	1,47,121	73,977	70,573	1,44,550	-1.52	-1.98	-1.75
24	RAICHUR	50,427	43,227	93,654	53,227	46,989	1,00,216	5.55	8.70	7.01
25	RAMANAGARA	24,525	22,866	47,391	23,770	22,095	45,865	-3.08	-3.37	-3.22
26	SHIMOGA	46,006	43,191	89,197	45,375	42,643	88,018	-1.37	-1.27	-1.32
27	TUMKUR	68,332	60,922	1,29,254	66,576	59,822	1,26,398	-2.57	-1.81	-2.21
28	UDUPI	27,762	25,647	53,409	27,972	25,906	53,878	0.76	1.01	0.88
29	UTTARA KANNADA	37,426	34,826	72,252	37,019	34,177	71,196	-1.09	-1.86	-1.46
30	YADGIRI	28,813	22,194	51,007	29,085	23,022	52,107	0.94	3.73	2.16
	Total	15,59,068	14,47,951	30,07,019	15,67,247	14,49,861	30,17,108	0.52	0.13	0.34

Enrolment Elementary:

Enrolment Elementary : All Management:						
Enrolment (Elementary)				% Increase/decrease		
Year	Boys	Girls	Total	Boys	Girls	Total
2012-13	43,57,503	40,38,086	83,95,589	-0.23	-0.47	-0.35
2011-12	43,67,500	40,57,357	84,24,857	0.67	0.34	0.51
2010-11	43,38,393	40,43,625	83,82,018	-0.25	-0.31	-0.28
2009-10	43,49,073	40,56,129	84,05,202	-1.40	-1.64	-1.51
2008-09	44,10,762	41,23,630	85,34,392	-0.67	-0.70	-0.68
2007-08	44,40,422	41,52,525	85,92,947			
Enrolment Elementary : Govt. Schools						
Enrolment (Elementary)				% Increase/decrease		
Year	Boys	Girls	Total	Boys	Girls	Total
2012-13	22,64,280	23,13,652	45,77,932	-2.32	-0.84	-1.58
2011-12	23,18,138	23,33,195	46,51,333	-3.45	-3.30	-3.37
2010-11	24,00,920	24,12,828	48,13,748	-4.72	-4.10	-4.41
2009-10	25,19,948	25,16,017	50,35,965	-6.42	-5.79	-6.11
2008-09	26,92,836	26,70,630	53,63,466	-4.90	-4.59	-4.75
2007-08	28,31,683	27,99,089	56,30,772			

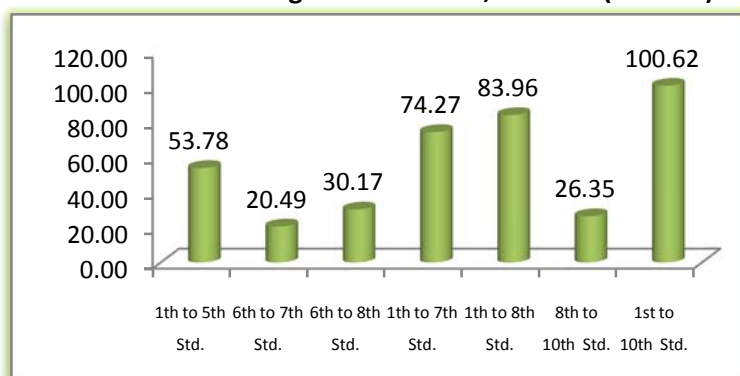
Enrolment and Class wise Percentage to Total Enrolment

Sl. No.	Class	Enrolment in Lakhs			Percentage to the Total Enrolment
		Boys	Girls	Total	
1	1 st Std.	5.92	5.56	11.48	11.40
2	2 nd Std.	5.65	5.16	10.81	10.74
3	3 rd Std.	5.49	5.09	10.58	10.52
4	4 th Std.	5.40	5.01	10.41	10.34
5	5 th Std.	5.45	5.06	10.51	10.45
6	6 th Std.	5.36	4.96	10.33	10.26
7	7 th Std.	5.27	4.89	10.16	10.10
8	8 th Std.	5.04	4.65	9.68	9.62
9	9 th Std.	4.52	4.13	8.66	8.60
10	10 th Std.	4.12	3.89	8.01	7.96
Total		52.22	48.40	100.62	100.00
Different Level					
11	1 th to 5 th Std.	27.90	25.88	53.78	53.45
12	6 th to 7 th Std.	10.64	9.85	20.49	20.36
13	6 th to 8 th Std.	15.67	14.50	30.17	29.98
14	1 th to 7 th Std.	38.54	35.73	74.27	73.82
15	1 th to 8 th Std.	43.58	40.38	83.96	83.44
16	8 th to 10 th Std.	13.68	12.67	26.35	26.18
17	1 st to 10 th Std.	52.22	48.40	100.62	

Source : DISE 2011-12

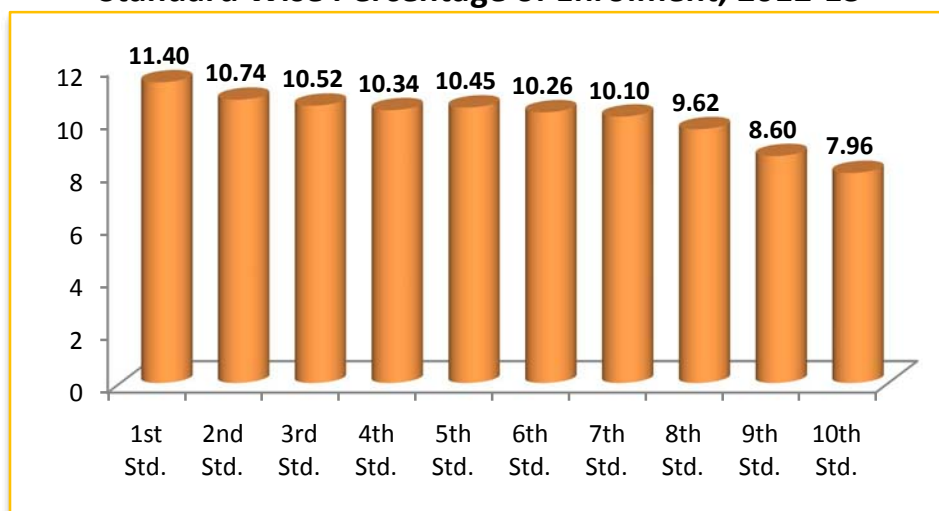
There are 100.97 lakhs children in 1st to 10th standards in the State. Of this total, 54.15 lakhs children are in 1st to 5th standards, 20.75 lakhs children are in 6th to 7th standards and 26.07 lakhs children are in 8th, 9th and 10th standards of the high school section.

Graph 7 (for TABLE 15)
Level Wise Percentage of Enrolment, 2012-13 (in lakhs)



Graph

Standard Wise Percentage of Enrolment, 2012-13



Enrolments in Schools by Management: Differential between 2006-07 and 2012-13

Management	Year	1st Std.	1 to 5	6 to 8	1 to 8	1 to 10
Education Dept	2006-07	7.69	38.48	18.73	57.21	63.31
	2007-08	7.59	37.47	18.84	56.31	62.63
	2008-09	7.02	35.62	18.01	53.63	60.01
	2009-10	6.35	33.44	16.92	50.36	57.03
	2010-11	6.21	31.71	16.43	48.14	54.54
	2011-12	5.94	30.41	16.10	46.51	52.83
	2012-13	5.86	28.92	15.95	44.87	50.60
Increase / Decrease.		1.83	9.56	2.78	12.34	12.71
S.W+LB	2006-07	0.11	0.49	0.36	0.86	1.13
	2007-08	0.08	0.39	0.34	0.73	0.95
	2008-09	0.06	0.3	0.42	0.72	0.91
	2009-10	0.04	0.21	0.49	0.7	0.94
	2010-11	0.04	0.21	0.61	0.82	1.13
	2011-12	0.04	0.20	0.70	0.90	1.09
	2012-13	0.03	0.18	0.72	0.90	1.30

Increase / Decrease.		0.08	0.31	-0.36	-0.04	-0.17
Aided	2006-07	0.9	4.66	4.69	9.34	14.35
	2007-08	0.87	4.48	4.47	8.95	14.04
	2008-09	0.83	4.38	4.73	9.1	14.39
	2009-10	0.91	4.73	4.91	9.63	15.15
	2010-11	0.9	4.74	4.97	9.71	15.3
	2011-12	0.9	4.64	4.83	9.47	14.97
	2012-13	0.98	5.00	4.87	9.87	15.36
Increase / Decrease.		-0.08	-0.34	-0.18	-0.53	-1.01
Unaided	2006-07	3.15	13.38	6.01	19.39	23.08
	2007-08	3.01	13.2	6.09	19.28	23.08
	2008-09	3.4	14.78	6.5	21.28	24.87
	2009-10	3.72	15.97	6.95	22.92	26.68
	2010-11	3.99	17.23	7.47	24.70	28.77
	2011-12	4.28	18.65	8.26	26.90	31.37
	2012-13	4.56	19.44	8.43	27.87	32.40
Increase / Decrease.		-1.41	-6.06	-2.42	-8.48	-9.32
Others	2006-07	0.05	0.23	0.17	0.4	0.5
	2007-08	0.09	0.43	0.22	0.66	0.75
	2008-09	0.07	0.35	0.25	0.6	0.74
	2009-10	0.05	0.25	0.19	0.44	0.55
	2010-11	0.05	0.25	0.2	0.45	0.57
	2011-12	0.06	0.27	0.19	0.46	0.58
	2012-13	0.05	0.23	0.19	0.43	0.54
Increase / Decrease.		0.00	0.00	-0.02	-0.03	-0.04
Total	2006-07	11.9	57.24	29.96	87.2	102.37
	2007-08	11.64	55.97	29.96	85.93	101.45
	2008-09	11.38	55.43	29.91	85.33	100.92
	2009-10	11.07	54.6	29.45	84.05	100.35
	2010-11	11.19	54.15	29.69	83.82	100.29
	2011-12	11.20	54.18	30.07	84.25	101.02
	2012-13	11.48	53.78	30.17	83.96	100.67
Increase / Decrease.		0.42	3.46	-0.21	3.24	1.70

Management-wise Decline in Enrollment 2006-07 to 2012-13 (in lakhs)

Management	1 st	1 to 5	6 to 8	1 to 7	1 to 8	1 to 10	Total Enrolment
Education Dep.	1.83	9.56	2.78	53.05	12.34	12.71	<u>2006-07</u>
SW + LB	0.08	0.31	-0.36	0.70	-0.04	-0.17	102.37
Aided	-0.08	-0.34	-0.18	6.80	-0.53	-1.01	<u>2012-13</u>
Un - Aided	-1.41	-6.06	-2.42	17.36	-8.48	-9.32	100.67
Others	0.00	0.00	-0.02	0.35	-0.03	-0.04	<u>Net Decrease</u>
Total	0.42	3.46	-0.21	78.26	3.24	1.70	1.7

**Decrease in Enrolments in the State from 2006-07 to 2012-13
[Sex-wise and Total Tally]**

		1st Std.	1 to 5	1 to 8	1 to 10
2006-07	Boys	6.19	29.54	45.19	53.17
	Girls	5.71	27.7	42.01	49.2
	Total	11.9	57.24	87.20	102.37
2012-13	Boys	5.92	27.90	43.85	52.21
	Girls	5.96	25.88	40.38	48.41
	Total	11.88	53.78	84.23	100.62
Diff. 2006-07 to 2012-13 (Nos.)	Boys	0.27	1.64	1.34	0.96
	Girls	-0.25	1.82	1.63	0.79
	Total	0.02	3.46	2.97	1.75
Percent Diff. 2006-07 as Base	Boys	4.36	5.55	2.97	1.81
	Girls	-4.38	6.57	3.88	1.61
	Total	-0.02	12.12	6.85	3.41

Distribution of Free Text Books for Private Aided School children:

There are 987,121 children in 1 to 8 standards of private aided schools of the State. All of them are eligible for benefit under this scheme.

Enrolment Ratios –GER Primary Level

Gross Enrolment Ratio - Primary level (State)			
Year	Boys	Girls	Total
2012-13	106.59	107.05	106.81
2011-12	107.14	107.79	107.46
2010-11	107.03	108.07	107.53
2009-10	106.11	107.14	106.53
2008-09	107.80	109.70	106.90
2007-08	111.18	110.69	110.93

The Gross Enrolment Ratio of 106.81 at the Primary level has marginally increased from previous year. The GER at the primary level require further improvement. No major gender gap is noticed in GER at State level.

District wise GER at Primary Level

The GER is not spread evenly in all the districts. There are few districts where the GER at primary level is very low e.g. Bangalore rural (95.43), Shimogga (95.72), Uttara Kannada (93.94), Kodagu (92.99) and Kolar (95.97). State has reported that Bangalore Rural has low GER just because of district is adjacent to the Bangalore urban district. Children are travelling from the Bangalore rural to Bangalore urban for Education. Likewise some district showing lower GER because of children travelling from one district to another district even for primary education.

All Management Gross Enrolment Ratio: Primary level										
Sno	District	2011-12			2012-13			Percentage of Increase		
		Boys	Girls	Total	Boys	Girls	Total	Boys	Girls	Total
1	2	6	7	8	6	7	8	9	10	11
1	BAGALKOT	102.65	103.7	103.15	102.76	103.36	103.05	0.1	-0.3	-0.1
2	BANGALORE RURAL	94.98	95.91	95.43	95.62	97.28	96.42	0.6	1.4	1.0
3	BANGALORE URBAN	123.84	127.78	125.73	133.21	136.79	134.92	9.4	9.0	9.2
4	BELGAUM	105.05	105.76	105.39	104.59	105.49	105.02	-0.5	-0.3	-0.4
5	BELLARY	103.43	103.1	103.27	104.45	103.26	103.87	1.0	0.2	0.6
6	BIDAR	128.61	128.84	128.72	123.73	124.56	124.13	-4.9	-4.3	-4.6
7	BIJAPUR	106.27	104.23	105.3	107.10	104.02	105.64	0.8	-0.2	0.3
8	CHAMARAJANAGARA	101.67	101.8	101.74	101.78	101.23	101.51	0.1	-0.6	-0.2
9	CHICKBALLAPUR	98.43	97.99	98.22	96.49	94.16	95.36	-1.9	-3.8	-2.9
10	CHIKKAMANGALORE	99.41	99.46	99.44	96.80	96.87	96.84	-2.6	-2.6	-2.6
11	CHITRADURGA	99.78	101.63	100.66	96.87	99.59	98.17	-2.9	-2.0	-2.5
12	DAKSHINA KANNADA	98.33	98.23	98.28	96.40	95.81	96.11	-1.9	-2.4	-2.2
13	DAVANAGERE	107.1	106.89	107	104.36	103.80	104.09	-2.7	-3.1	-2.9
14	DHARWAD	112.93	114.45	113.66	105.55	106.40	105.96	-7.4	-8.1	-7.7
15	GADAG	103.67	103.66	103.66	101.96	102.27	102.11	-1.7	-1.4	-1.5
16	GULBARGA	124.65	126.23	125.4	122.31	121.83	122.08	-2.3	-4.4	-3.3
17	HASSAN	94.88	101.62	98.05	91.85	98.64	95.04	-3.0	-3.0	-3.0
18	HAVERI	99.04	98.66	98.86	97.56	97.87	97.71	-1.5	-0.8	-1.1
19	KODAGU	94.66	91.29	92.99	90.23	88.34	89.29	-4.4	-2.9	-3.7
20	KOLAR	95.96	95.99	95.97	93.31	94.19	93.74	-2.7	-1.8	-2.2
21	KOPPAL	104.03	103.56	103.8	99.52	99.43	99.48	-4.5	-4.1	-4.3

22	MANDYA	97.56	97.58	97.57	92.81	93.55	93.17	-4.7	-4.0	-4.4
23	MYSORE	121.92	122.83	122.36	117.65	118.15	117.89	-4.3	-4.7	-4.5
24	RAICHUR	111.23	114.29	112.67	111.98	115.08	113.44	0.8	0.8	0.8
25	RAMANAGARA	95.98	95.77	95.88	94.46	94.59	94.52	-1.5	-1.2	-1.4
26	SHIMOGA	95.39	96.06	95.72	93.30	93.06	93.18	-2.1	-3.0	-2.5
27	TUMKUR	97.19	96.07	96.65	94.38	93.70	94.05	-2.8	-2.4	-2.6
28	UDUPI	98.62	98.48	98.55	96.34	96.48	96.41	-2.3	-2.0	-2.1
29	UTTARA KANNADA	94.03	93.85	93.94	91.77	91.31	91.55	-2.3	-2.5	-2.4
30	YADGIRI	109.5	104.84	107.28	106.77	103.79	105.35	-2.7	-1.0	-1.9
	Total	107.14	107.79	107.46	106.59	107.05	106.81	-0.5	-0.7	-0.6

Source : DISE and OOSC

Gross Enrolment Ratio – Upper Primary level (State)			
Year	Boys	Girls	Total
2012-13	106.57	104.53	105.59
2011-12	104.90	105.44	105.66
2010-11	103.56	104.31	103.92
2009-10	103.07	103.08	103.09
2008-09	109.96	108.18	107.30
2007-08	107.78	107.29	107.53

All Management Gross Enrolment Ratio: Upper Primary level										
Slno	District	2011-12			2012-13			Percentage of Increase		
		Boys	Girls	Total	Boys	Girls	Total	Boys	Girls	Total
1	2	6	7	8	6	7	8	9	10	11
1	BAGALKOT	107.97	108.05	108.01	111.81	112.46	112.12	3.84	4.41	4.11
2	BANGALORE RURAL	98.64	100.67	99.62	96.34	97.54	96.92	-2.30	-3.13	-2.70
3	BANGALORE URBAN	117.73	120.65	119.14	122.54	123.27	122.89	4.81	2.62	3.75
4	BELGAUM	106.47	106.34	106.41	107.43	106.79	107.13	0.96	0.45	0.72
5	BELLARY	96.82	92.55	94.74	100.39	95.97	98.24	3.57	3.42	3.50
6	BIDAR	80.22	81.5	80.84	78.84	79.82	79.31	-1.38	-1.68	-1.53
7	BIJAPUR	100	98.37	99.24	102.07	101.19	101.66	2.07	2.82	2.42
8	CHAMARAJANAGARA	110.59	112.22	111.38	110.64	110.71	110.68	0.05	-1.51	-0.70
9	CHICKBALLAPUR	96.86	102.68	99.62	94.20	97.82	95.92	-2.66	-4.86	-3.70
10	CHIKKAMANGALORE	102.24	103.16	102.69	100.71	99.29	100.02	-1.53	-3.87	-2.67
11	CHITRADURGA	102.92	103.03	102.97	101.72	100.69	101.22	-1.20	-2.34	-1.75
12	DAKSHINA KANNADA	102.84	100.52	101.71	102.37	100.69	101.55	-0.47	0.17	-0.16
13	DAVANAGERE	109.82	106.85	108.37	111.39	108.63	110.04	1.57	1.78	1.67
14	DHARWAD	117.2	122.37	119.67	111.50	114.03	112.71	-5.70	-8.34	-6.96
15	GADAG	98.74	98.59	98.67	103.93	102.51	103.24	5.19	3.92	4.57
16	GULBARGA	113.45	115.89	114.6	113.48	115.61	114.49	0.03	-0.28	-0.11

17	HASSAN	99.08	100.44	99.74	96.93	97.69	97.30	-2.15	-2.75	-2.44
18	HAVERI	99.57	101.68	100.59	99.88	102.44	101.12	0.31	0.76	0.53
19	KODAGU	99.75	98.08	98.93	98.43	95.16	96.82	-1.32	-2.92	-2.11
20	KOLAR	99.5	100.85	100.16	97.76	98.48	98.11	-1.74	-2.37	-2.05
21	KOPPAL	107.83	107.97	107.89	108.97	110.29	109.59	1.14	2.32	1.70
22	MANDYA	99.63	100.5	100.05	98.91	98.97	98.94	-0.72	-1.53	-1.11
23	MYSORE	121.51	124.03	122.73	119.66	121.57	120.58	-1.85	-2.46	-2.15
24	RAICHUR	116.91	123.96	120.06	123.40	134.75	128.47	6.49	10.79	8.41
25	RAMANAGARA	104.05	98.93	101.51	100.84	95.60	98.25	-3.21	-3.33	-3.26
26	SHIMOGA	99.08	99.57	99.32	97.72	98.31	98.00	-1.36	-1.26	-1.32
27	TUMKUR	102.61	101.97	102.31	99.98	100.13	100.05	-2.63	-1.84	-2.26
28	UDUPI	104.3	100.57	102.48	105.09	101.59	103.38	0.79	1.02	0.90
29	UTTARA KANNADA	99.21	99.02	99.12	98.13	97.17	97.67	-1.08	-1.85	-1.45
30	YADGIRI	93.96	88.67	91.59	94.85	91.98	93.56	0.89	3.31	1.97
	Total	104.9	105.44	105.16	105.61	105.72	105.66	0.71	0.28	0.50

Source : DISE and OOSC

The gross enrolment ratios in the State for boys, girls and total at primary level and upper primary level are 106.81 and 105.66. These ratios compare well with similar ratios for 2011-12 at the State level. However within the State and across the districts, variations are observed as there has been significant exchange of population because migration for labor [E.g.: of Dakshina Kannada and Kodagu]. The case of Bangalore city is distinct because of its urban structure and floating populations.

Similar reasons hold water in regard to GER at upper primary level. It is noted that overall changes during the two years 2011-12 and 2012-13 are marginal.

It is noted that overall GER ratios have marginally declined both at primary and upper primary levels which is a positive sign.

Net Enrolment Ratio - Primary level

NER Enrolment Ratio - Primary level (State)			
Year	Boys	Girls	Total
2012-13	97.69	97.68	97.69
2011-12	98.93	99.51	99.21
2010-11	98.39	99.36	98.86
2009-10	95.40	94.79	95.21
2008-09	98.20	98.38	97.60
2007-08	96.04	96.16	96.10

District wise NER at Primary Level:

The further distribution of NER by district suggests that there is a need to make concerted efforts in few districts where the NER is very low. The NER is lowest particularly in Bangalore Rural (87.73), Kodagu (84.87), Uttara Kannada (86.57), Shimoga(87.44) and Chikkaballapura (87.45). Travelling from district to district for primary education is influencing on the NER for ex. Bangalore Rural District.

All Management Net Enrolment Ratio: Primary level										
Sl no	District	2011-12			2012-13			Percentage of decrees/Increase		
		Boys	Girls	Total	Boys	Girls	Total	Boys	Girls	Total
1	2	6	7	8	6	7	8	9	10	11
1	BAGALKOT	97.77	98.7	98.22	96.88	97.57	97.21	-0.89	-1.13	-1.01
2	BANGALORE RURAL	87.4	88.08	87.73	88.96	90.97	89.93	1.56	2.89	2.20
3	BANGALORE URBAN	114.33	117.43	115.81	115.17	117.61	116.33	0.84	0.18	0.52
4	BELGAUM	100.63	101.27	100.93	100.66	101.50	101.06	0.03	0.23	0.13
5	BELLARY	96.04	96.12	96.08	93.91	92.35	93.15	-2.13	-3.77	-2.93
6	BIDAR	125.34	125.17	125.26	112.71	113.23	112.96	-12.63	-11.94	-12.30
7	BIJAPUR	101.49	98.98	100.3	100.41	97.50	99.03	-1.08	-1.48	-1.27
8	CHAMARAJANAGARA	91.25	91.1	91.17	95.25	94.83	95.05	4.00	3.73	3.88
9	CHICKBALLAPUR	92.13	91.81	91.98	89.18	86.76	88.01	-2.95	-5.05	-3.97
10	CHIKKAMANGALORE	87.41	87.78	87.59	90.79	91.04	90.91	3.38	3.26	3.32
11	CHITRADURGA	85.36	87.3	86.28	90.96	93.33	92.09	5.60	6.03	5.81
12	DAKSHINA KANNADA	88.02	88.33	88.17	90.35	89.77	90.07	2.33	1.44	1.90
13	DAVANAGERE	94.5	94.75	94.62	98.54	97.63	98.10	4.04	2.88	3.48
14	DHARWAD	100.52	101.98	101.23	100.08	100.53	100.30	-0.44	-1.45	-0.93
15	GADAG	96.82	96.52	96.67	93.02	92.96	92.99	-3.80	-3.56	-3.68
16	GULBARGA	114.75	115.91	115.3	97.87	95.52	96.75	-16.88	-20.39	-18.55
17	HASSAN	85.02	91.28	87.96	86.33	92.67	89.31	1.31	1.39	1.35
18	HAVERI	93.06	92.74	92.9	92.87	93.16	93.01	-0.19	0.42	0.11
19	KODAGU	84.63	81.83	83.24	84.27	82.54	83.41	-0.36	0.71	0.17
20	KOLAR	90.3	90.68	90.49	86.70	87.58	87.13	-3.60	-3.10	-3.36
21	KOPPAL	98.61	98.43	98.53	94.00	94.07	94.03	-4.61	-4.36	-4.50
22	MANDYA	86.17	86.46	86.31	86.68	87.31	86.98	0.51	0.85	0.67
23	MYSORE	106.34	107.72	107.01	109.72	109.80	109.75	3.38	2.08	2.74
24	RAICHUR	105.1	107.84	106.39	98.21	95.87	97.11	-6.89	-11.97	-9.28
25	RAMANAGARA	86.69	86.56	86.63	88.38	88.25	88.32	1.69	1.69	1.69
26	SHIMOGA	88.43	89.24	88.83	88.42	88.29	88.36	-0.01	-0.95	-0.47
27	TUMKUR	86.83	86.33	86.59	89.02	88.15	88.60	2.19	1.82	2.01
28	UDUPI	87.4	88.17	87.77	90.51	90.98	90.74	3.11	2.81	2.97
29	UTTARA KANNADA	85.11	85.42	85.26	87.57	87.33	87.45	2.46	1.91	2.19
30	YADGIRI	101.7	97.04	99.48	98.39	95.76	97.14	-3.31	-1.28	-2.34
	Total	98.93	99.51	99.21	97.69	97.68	97.69	-1.24	-1.83	-1.52

Net Enrolment Ratio - Upper Primary level

NER Enrolment Ratio - Upper Primary level (State)			
Year	Boys	Girls	Total
2012-13	94.84	94.82	94.83
2011-12	96.68	97.23	96.95
2010-11	92.97	94.21	93.57
2009-10	96.07	95.01	95.15
2008-09	94.04	97.95	98.5
2007-08	94.76	93.89	95.91

The NER data at upper primary level is 96.95 is showing needs effort at upper primary level. The lower NER (96.95) indicates that there is large number of children who are not into the formal system of education.

District Wise NER at Upper Primary Level:

The districts with lower NER at upper primary level are Bidar(78.61), Mandya (85.69) , Hassan(87.75), Yadgiri (87.80), and kodagu(87.85)

These ratios compare well with similar ratios for 2011-12 at the State level. However within the State and across the districts, variations are observed as there has been significant exchange of population because migration for labor [E.g.: of Dakshina Kannada and Kodagu]. The case of Bangalore city is distinct because of its urban structure and floating populations.

In some districts such as Bangalore city, Mysore and Raichur, the NER has crossed the figure of 100 percent as children enumerated elsewhere have migrated to the city and enrolled in the city schools.

Percentage of underage and overage children to total enrolment

Year	Primary level			Upper primary level		
	Under-age	Over-age	Total grossness	Under-age	Over-age	Total grossness
2012-13	8.35	8.75	8.54	10.20	10.31	10.25
2011-12	4.56	3.23	7.79	3.51	5.19	8.70
2010-11	4.86	3.10	7.96	4.26	5.43	9.69
2009-10	4.53	2.89	7.42	3.69	4.10	7.79
2008-09	5.72	3.09	8.81	4.50	4.49	8.99
2007-08	3.72	1.71	5.42	3.30	1.02	4.31

Percentage girls to total enrolment and GPI in enrolment							
Indicator	School Category	2007-08	2008-09	2009-10	2010-11	2011-12	2012-13
% Girls to total enrolment	Primary	48.40	48.44	48.4	48.34	48.16	48.12
	Upper Primary	47.96	48.27	48.17	48.1	48.15	48.05
Gender Parity Index(GPI)	Primary	0.94	0.94	0.94	0.93	0.93	1.00
	Upper Primary	0.93	0.93	0.93	0.93	0.93	1.00

All Management Gender Gap: Primary level					
SI no	District	2011-12		2012-13	
		Gender Parity Index	G. Gap in Enrl	Gender Parity Index	G. Gap in Enrl
1	BAGALKOT	1.11	-9.09	1.00	4.05
2	BANGALORE RURAL	1.00	-0.06	0.99	2.62
3	BANGALORE URBAN	1.06	-2.85	0.99	2.96
4	BELGAUM	1.07	-3.41	1.00	4.39
5	BELLARY	1.00	-0.22	1.01	3.70
6	BIDAR	1.01	-0.72	1.00	4.19
7	BIJAPUR	1.02	-1.08	1.02	6.59
8	CHAMARAJANAGARA	0.95	2.62	1.00	3.20
9	CHICKBALLAPUR	0.99	0.25	1.01	4.55
10	CHIKKAMANGALORE	1.04	-1.74	1.00	3.02
11	CHITRADURGA	0.98	1.04	0.99	3.39
12	DAKSHINA KANNADA	0.99	0.58	1.00	3.35
13	DAVANAGERE	0.96	2.06	1.00	3.41
14	DHARWAD	1.00	-0.07	1.00	2.70
15	GADAG	1.02	-0.96	1.00	3.11
16	GULBARGA	0.98	1.13	1.00	5.21
17	HASSAN	0.99	0.32	0.96	2.44
18	HAVERI	1.01	-0.68	1.00	2.89
19	KODAGU	0.98	1.10	1.01	1.71
20	KOLAR	1.00	0.21	1.00	2.14
21	KOPPAL	1.07	-3.50	1.00	3.65
22	MANDYA	0.98	1.09	1.00	4.02
23	MYSORE	0.99	0.38	1.00	2.95
24	RAICHUR	1.04	-1.86	0.99	4.21
25	RAMANAGARA	0.96	2.18	1.00	3.31
26	SHIMOGA	0.98	0.87	1.00	3.07
27	TUMKUR	0.99	0.36	1.00	3.72
28	UDUPI	0.99	0.65	1.00	2.79
29	UTTARA KANNADA	0.97	1.70	1.00	3.42
30	YADGIRI	0.95	2.38	1.02	6.15
Total		0.90	5.12	1.00	3.76
Source : DISE and OOSC					

All Management Gender Gap: Upper Primary level					
Sl no	District	2011-12		2012-13	
		Gender Parity Index	G. Gap in Enrl	Gender Parity Index	G. Gap in Enrl
1	BAGALKOT	1.17	-12.50	1.01	3.59
2	BANGALORE RURAL	0.95	2.31	1.01	2.83
3	BANGALORE URBAN	1.00	0.24	1.01	2.96
4	BELGAUM	1.09	-4.20	0.99	4.83
5	BELLARY	0.97	1.57	0.96	4.78
6	BIDAR	0.92	4.44	1.01	2.39
7	BIJAPUR	1.03	-1.45	0.99	6.31
8	CHAMARAJANAGARA	0.90	5.39	1.00	3.24
9	CHICKBALLAPUR	0.97	1.59	1.04	3.08
10	CHIKKAMANGALORE	1.01	-0.39	0.99	3.74
11	CHITRADURGA	0.98	0.90	0.99	3.55
12	DAKSHINA KANNADA	0.96	1.89	0.98	3.56
13	DAVANAGERE	0.93	3.83	0.98	3.61
14	DHARWAD	1.00	0.18	1.02	3.19
15	GADAG	1.03	-1.37	0.99	3.55
16	GULBARGA	0.93	3.58	1.02	4.52
17	HASSAN	0.96	2.05	1.01	1.74
18	HAVERI	1.00	-0.04	1.03	1.73
19	KODAGU	1.00	0.13	0.97	3.66
20	KOLAR	0.97	1.33	1.01	1.97
21	KOPPAL	1.06	-2.90	1.01	4.79
22	MANDYA	0.88	6.45	1.00	4.28
23	MYSORE	0.99	0.31	1.02	2.35
24	RAICHUR	1.05	-2.31	1.09	6.22
25	RAMANAGARA	0.88	6.40	0.95	3.65
26	SHIMOGA	0.98	1.09	1.01	3.10
27	TUMKUR	0.99	0.35	1.00	5.34
28	UDUPI	0.93	3.44	0.97	3.83
29	UTTARA KANNADA	0.95	2.61	0.99	3.99
30	YADGIRI	0.93	3.62	0.97	11.64
Total		0.98	11.85	1.00	3.89
Source : DISE and OOSC					

Percentage enrolment and population by social category

Percentage enrolment by social category										
Slno	District	SC			ST			Muslim		
		Boys	Girls	Total	Boys	Girls	Total	Boys	Girls	Total
1	2	6	7	8	6	7	8	6	7	8
1	BAGALKOT	18.97	18.58	18.78	5.07	5.21	5.14	12.04	12.45	12.24
2	BANGALORE RURAL	24.21	24.68	24.44	5.91	5.66	5.79	11.13	11.21	11.17
3	BANGALORE URBAN	15.57	16.05	15.80	2.58	2.63	2.60	13.16	14.03	13.58
4	BELGAUM	12.80	13.09	12.94	6.66	6.66	6.66	11.70	12.11	11.90
5	BELLARY	23.68	23.19	23.44	19.74	19.74	19.74	12.80	13.89	13.32
6	BIDAR	26.67	26.32	26.50	13.94	14.26	14.09	23.31	24.80	24.03
7	BIJAPUR	22.63	22.06	22.36	1.79	1.71	1.75	17.87	18.68	18.25
8	CHAMARAJANAGARA	26.45	26.21	26.33	12.42	12.63	12.52	6.77	6.94	6.85
9	CHIKKABALLAPURA	26.75	27.49	27.10	13.11	13.49	13.29	14.52	13.63	14.10
10	CHIKKAMANGALORE	25.78	26.30	26.03	4.91	5.03	4.97	11.01	11.05	11.03
11	CHITRADURGA	26.01	26.37	26.19	19.40	19.38	19.39	15.47	15.40	15.44
12	DAKSHINA KANNADA	7.88	7.98	7.93	3.96	4.03	4.00	31.73	31.82	31.77
13	DAVANAGERE	22.90	22.88	22.89	12.51	12.67	12.59	15.83	16.72	16.26
14	DHARWAD	11.61	10.98	11.31	5.13	5.15	5.14	23.95	25.01	24.47
15	GADAG	17.84	17.36	17.61	5.71	5.73	5.72	13.85	14.45	14.14
16	GULBARGA	28.11	26.68	27.43	1.90	1.82	1.86	22.34	23.83	23.04
17	HASSAN	22.59	22.94	22.76	2.21	2.25	2.23	8.23	8.21	8.22
18	HAVERI	15.29	14.92	15.11	9.01	9.10	9.05	21.41	22.11	21.75
19	KODAGU	14.43	15.33	14.87	12.95	13.57	13.25	20.46	20.19	20.33
20	KOLAR	31.59	31.89	31.73	5.97	5.81	5.89	14.93	16.36	15.63
21	KOPPAL	20.54	19.89	20.23	12.72	12.90	12.81	11.67	12.24	11.95
22	MANDYA	15.31	15.91	15.60	1.75	1.68	1.72	5.76	6.09	5.92
23	MYSORE	18.62	18.99	18.80	12.04	12.20	12.12	12.08	12.57	12.32
24	RAICHUR	22.39	21.30	21.87	19.40	18.69	19.06	14.51	15.67	15.06
25	RAMANAGARA	19.94	20.25	20.09	2.89	2.86	2.88	14.11	14.83	14.46
26	SHIMOGA	19.48	19.90	19.69	4.05	4.25	4.15	14.67	15.30	14.98
27	TUMKUR	20.53	20.65	20.58	8.03	8.03	8.03	11.24	12.06	11.63
28	UDUPI	7.61	7.62	7.62	5.51	5.30	5.41	11.24	10.95	11.10
29	UTTARA KANNADA	9.42	9.13	9.28	2.95	2.95	2.95	14.62	15.26	14.93
30	YADAGIRI	25.28	23.51	24.46	11.56	11.75	11.65	13.72	15.35	14.48
Total		19.48	19.36	19.43	7.64	7.66	7.65	15.05	15.74	15.38

Retention Rates:-

Retention Rates at the primary level (1 to 5) are quite high and may reach the three digit figure by next year. However retention rates at the elementary level leave a gap of 19.45 percent for the magic figure of 100 percent, during 2012-13. There is no difference between retention rates of boys and girls. However, across the districts, the rates vary.

Retention Rate - Primary Level:

All Management Retention Rate: Primary level							
S/no	District	2011-12			2012-13		
		Boys	Girls	Total	Boys	Girls	Total
1	2	3	4	5	6	7	8
1	BAGALKOT	82.16	83.34	82.73	83.26	86.34	84.72
2	BANGALORE RURAL	91.72	93.94	92.78	93.99	94.55	94.26
3	BANGALORE URBAN	97.72	97.99	97.85	104.14	105.26	104.68
4	BELGAUM	100.27	99.92	100.10	97.05	96.18	96.63
5	BELLARY	84.83	85.99	85.39	89.21	88.56	88.90
6	BIDAR	87.32	90.56	88.86	87.49	84.89	86.22
7	BIJAPUR	90.53	91.30	90.89	84.54	83.22	83.92
8	CHAMARAJANAGAR	93.11	94.76	93.90	95.75	96.24	95.99
9	CHIKKABALLAPURA	91.03	91.10	91.06	89.38	89.32	89.35
10	CHIKKAMANGALORE	95.20	95.26	95.23	94.37	93.85	94.12
11	CHITRADURGA	97.85	95.98	96.94	92.75	92.99	92.86
12	DAKSHINA KANNADA	102.29	100.28	101.30	99.53	98.15	98.86
13	DAVANAGERE	93.56	93.06	93.32	92.18	91.94	92.06
14	DHARWAD	96.17	98.13	97.11	89.67	91.52	90.56
15	GADAG	91.59	93.53	92.52	93.30	92.46	92.89
16	GULBARGA	107.01	106.33	106.68	94.93	93.15	94.07
17	HASSAN	90.92	90.80	90.86	91.16	92.74	91.93
18	HAVERI	95.35	94.50	94.94	93.37	93.58	93.47
19	KODAGU	98.24	96.57	97.44	92.33	90.22	91.28
20	KOLAR	88.31	90.00	89.12	87.57	90.86	89.15
21	KOPPAL	87.21	87.56	87.38	86.35	87.55	86.92
22	MANDYA	91.52	92.63	92.05	92.29	92.11	92.20
23	MYSORE	98.12	97.58	97.85	95.89	96.12	96.00
24	RAICHUR	88.42	87.84	88.14	89.01	90.81	89.87
25	RAMANAGARA	94.98	94.96	94.97	92.95	91.60	92.29
26	SHIMOGA	99.60	98.67	99.15	98.75	98.00	98.38
27	TUMKUR	101.06	97.90	99.52	92.30	90.81	91.58
28	UDUPI	102.90	101.81	102.37	96.62	98.41	97.49
29	UTTARKANNADA	92.93	92.79	92.87	95.95	95.66	95.81
30	YADGIRI	70.73	68.17	69.52	64.49	59.32	62.02
Total		93.69	93.82	93.75	92.36	92.26	92.31

Retention Rate Upper Primary Level (State)

Retention rate (Upper Primary level)			
Year	Boys	Girls	All
2012-13	93.77	91.92	92.87
2011-12	94.33	92.25	93.32
2010-11	94.66	94.40	94.53
2009-10	92.10	91.70	91.90
2008-09	88.70	88.00	88.40

District wise Retention Rate Upper Primary Level:

All Management Retention Rate: Upper Primary level							
S/no	District	2011-12			2012-13		
		Boys	Girls	Total	Boys	Girls	Total
1	2	3	4	5	6	7	8
1	BAGALKOT	82.16	83.34	82.73	89.25	86.99	88.15
2	BANGALORE RURAL	91.72	93.94	92.78	93.41	93.94	93.67
3	BANGALORE URBAN	97.72	97.99	97.85	100.58	99.52	100.06
4	BELGAUM	100.27	99.92	100.10	96.67	93.00	94.89
5	BELLARY	84.83	85.99	85.39	92.97	88.45	90.79
6	BIDAR	87.32	90.56	88.86	77.53	80.86	79.15
7	BIJAPUR	90.53	91.30	90.89	83.26	77.39	80.44
8	CHAMARAJANAGAR	93.11	94.76	93.90	99.83	95.99	97.95
9	CHIKKABALLAPURA	91.03	91.10	91.06	100.31	96.66	98.50
10	CHIKKAMANGALORE	95.20	95.26	95.23	98.71	98.22	98.47
11	CHITRADURGA	97.85	95.98	96.94	93.89	90.89	92.44
12	DAKSHINA KANNADA	102.29	100.28	101.30	101.59	100.36	100.99
13	DAVANAGERE	93.56	93.06	93.32	88.69	89.12	88.89
14	DHARWAD	96.17	98.13	97.11	91.42	89.56	90.51
15	GADAG	91.59	93.53	92.52	101.04	99.74	100.40
16	GULBARGA	107.01	106.33	106.68	82.75	82.05	82.41
17	HASSAN	90.92	90.80	90.86	100.79	100.87	100.83
18	HAVERI	95.35	94.50	94.94	92.17	93.92	93.02
19	KODAGU	98.24	96.57	97.44	97.27	96.75	97.02
20	KOLAR	88.31	90.00	89.12	95.61	94.10	94.86
21	KOPPAL	87.21	87.56	87.38	83.15	78.60	80.98
22	MANDYA	91.52	92.63	92.05	98.62	96.96	97.81
23	MYSORE	98.12	97.58	97.85	100.60	98.09	99.36
24	RAICHUR	88.42	87.84	88.14	84.81	78.17	81.64
25	RAMANAGARA	94.98	94.96	94.97	96.62	96.81	96.71
26	SHIMOGA	99.60	98.67	99.15	96.32	95.95	96.14
27	TUMKUR	101.06	97.90	99.52	102.50	98.71	100.69
28	UDUPI	102.90	101.81	102.37	103.94	102.02	103.01
29	UTTARKANNADA	92.93	92.79	92.87	96.52	96.69	96.60
30	YADGIRI	70.73	68.17	69.52	68.55	62.04	65.67
Total		93.69	93.82	93.75	93.77	91.92	92.87

Retention Rate Elementary level (State)

Retention rate (Elementary level)			
Year	Boys	Girls	All
2012-13	81.45	79.40	80.45
2011-12	81.10	79.71	80.43
2010-11	98.04	98.11	98.07
2009-10	95.59	95.54	95.58
2008-09	94.03	93.89	93.82

District wise Retention Rate Elementary Level:

II Management Retention Rate: Elementary level							
Sno	District	2011-12			2012-13		
		Boys	Girls	Total	Boys	Girls	Total
1	BAGALKOT	67.80	65.44	66.67	68.38	67.82	68.11
2	BANGALORE RURAL	88.80	87.70	88.26	39.56	40.39	39.97
3	BANGALORE URBAN	93.56	95.60	94.55	93.85	95.50	94.65
4	BELGAUM	87.80	85.28	86.60	86.70	82.67	84.74
5	BELLARY	66.05	61.83	64.03	68.54	65.91	67.28
6	BIDAR	57.24	63.87	60.38	59.48	64.22	61.74
7	BIJAPUR	65.32	61.86	63.71	82.07	61.26	70.93
8	CHAMARAJANAGAR	86.74	85.87	86.32	73.08	69.95	71.54
9	CHIKKABALLAPURA	91.20	89.40	90.32	NA	NA	NA
10	CHIKKAMANGALORE	82.44	81.30	81.88	83.98	85.48	84.70
11	CHITRADURGA	82.53	81.67	82.11	83.79	81.79	82.83
12	DAKSHINA KANNADA	104.01	99.68	101.90	101.94	100.53	101.26
13	DAVANAGERE	78.09	77.97	78.03	80.18	79.93	80.06
14	DHARWAD	91.79	92.38	92.08	87.70	91.85	89.67
15	GADAG	80.34	79.77	80.07	87.17	86.97	87.08
16	GULBARGA	59.00	56.29	57.73	45.01	45.28	45.14
17	HASSAN	87.75	90.42	89.04	86.48	87.05	86.76
18	HAVERI	81.56	75.05	78.21	83.34	85.74	84.50
19	KODAGU	95.91	92.72	94.33	88.43	88.86	88.64
20	KOLAR	82.44	81.30	81.88	44.97	45.19	45.08
21	KOPPAL	68.36	64.39	66.48	68.31	60.69	64.56
22	MANDYA	88.14	86.66	87.43	87.63	86.62	87.14
23	MYSORE	96.43	95.55	96.00	93.74	93.45	93.60
24	RAICHUR	57.13	49.63	53.55	60.59	56.53	58.67
25	RAMANAGARA	88.81	87.69	88.26	NA	NA	NA
26	SHIMOGA	92.40	90.14	91.30	87.80	84.59	86.22
27	TUMKUR	102.04	95.99	99.13	95.18	88.62	91.98
28	UDUPI	100.63	96.75	98.74	104.72	100.67	102.74
29	UTTARKANNADA	95.88	93.07	94.50	90.14	88.31	89.25
30	YADGIRI	59.00	56.29	57.73	NA	NA	NA
Total		81.10	79.71	80.43	81.45	79.40	80.45

Retention rates at total elementary level are 81.10, 79.71 and 80.43 percent for boys, girls and all children, during 2012-13. They have been appreciating over the years.

GROSS COMPLETION RATES

'No detention' policy is practiced in the State. However, if attendance of children falls short of 75 percent of number of days a school has worked as well as 60 percent margin alternatively on health grounds, a child is detained in the same standard and advised to repeat the grade. This is how in a few districts gross completion ratios fall short of 100. In a few districts such as Hassan, rates of completion cross the 100 mark, perhaps because of lateral entry of children from other regions.

Completion Rates depend upon promotion -/ repetition and drop-out rates. Promotion rates are > 95.00 percent at Primary & Upper Primary levels respectively. Repetition rates are quite low, except in Koppal district.

Annual average Drop- out rate :

Annual Average Dropout Rate (Primary Level)							
Slno	District	2011-12			2012-13		
		Boys	Girls	Total	Boys	Girls	Total
1	2	3	4	5	6	7	8
1	BAGALKOT	2.22	1.06	1.66	3.37	3.76	3.55
2	BANGALORE RURAL	0.00	0.00	0.00	0.36	0.05	0.21
3	BANGALORE URBAN	0.00	0.00	0.00	0.00	0.00	0.00
4	BELGAUM	0.00	0.00	0.00	1.22	1.76	1.46
5	BELLARY	1.03	0.06	0.56	2.58	3.78	3.16
6	BIDAR	4.54	5.33	4.92	7.99	7.23	7.63
7	BIJAPUR	5.76	6.55	6.13	4.16	5.31	4.70
8	CHAMARAJANAGARA	0.23	0.00	0.00	0.00	0.92	0.38
9	CHIKCKBALLAPUR	0.00	0.00	0.00	2.25	4.53	3.35
10	CHIKKAMANGALORE	0.74	0.67	0.70	0.74	1.54	1.13
11	CHITRADURGA	0.37	0.73	0.55	2.99	2.75	2.87
12	DAKSHINA KANNADA	0.00	0.00	0.00	0.15	0.41	0.27
13	DAVANAGERE	2.41	1.83	2.13	2.88	3.62	3.24
14	DHARWAD	3.65	3.84	3.74	7.49	8.68	8.07
15	GADAG	0.00	0.36	0.13	3.15	3.53	3.33
16	GULBARGA	0.00	0.00	0.00	5.14	6.79	5.93
17	HASSAN	0.82	0.39	0.61	2.17	2.32	2.24
18	HAVERI	1.42	1.90	1.65	2.47	1.59	2.04
19	KODAGU	0.61	2.02	1.30	1.44	1.79	1.61
20	KOLAR	2.00	1.63	1.82	3.45	2.49	2.98

21	KOPPAL	4.10	4.26	4.18	5.71	6.02	5.86
22	MANDYA	1.71	2.09	1.89	3.58	3.43	3.51
23	MYSORE	0.00	0.00	0.00	2.39	2.69	2.54
24	RAICHUR	3.57	3.90	3.73	2.59	3.00	2.79
25	RAMANAGARA	1.64	2.37	1.99	1.96	2.56	2.25
26	SHIMOGA	3.42	3.29	3.35	1.32	2.31	1.80
27	TUMKUR	0.00	0.64	0.16	2.01	2.42	2.21
28	UDUPI	0.00	0.00	0.00	0.00	0.00	0.00
29	UTTARA KANNADA	0.54	0.54	0.54	1.02	1.76	1.38
30	YADGIRI	3.92	5.72	4.76	8.45	8.60	8.52
	Total	1.21	1.17	1.19	2.33	2.81	2.56

The dropout rate reported here is of only one year i.e. between 2011-12 and 2012-13 at primary level. This means, about 2.56% children are dropping out from the primary grades every year. The districts with high dropout rate at Lower primary level are Yadgir(8.52), Dharwad(8.07), Bidar(7.63), Gulberga(5.93) and Koppal (5.82).

Annual Average Dropout Rate (Upper Primary Level)							
Slno	District	2011-12			2012-13		
		Boys	Girls	Total	Boys	Girls	Total
1	2	3	4	5	6	7	8
1	BAGALKOT	5.44	5.81	5.61	5.96	7.42	6.66
2	BANGALORE RURAL	0.42	1.13	0.77	4.59	6.09	5.32
3	BANGALORE URBAN	1.42	0.41	0.92	0.39	0.98	0.68
4	BELGAUM	1.83	4.12	2.92	4.69	6.46	5.53
5	BELLARY	6	8.68	7.26	6.54	9.07	7.75
6	BIDAR	11.47	11.54	11.51	13.42	12.78	13.11
7	BIJAPUR	7.37	11.87	9.49	8.83	11.08	9.88
8	CHAMARAJANAGARA	4.13	3.31	3.73	4.20	5.15	4.66
9	CHICKBALLAPUR	5.59	9.29	7.41	4.62	5.83	5.21
10	CHIKKAMANGALORE	2.25	2.85	2.55	1.91	2.73	2.31
11	CHITRADURGA	4.34	4.52	4.43	4.82	5.52	5.16
12	DAKSHINA KANNADA	1.81	0.77	1.31	0.82	0.45	0.64
13	DAVANAGERE	7.29	6.84	7.07	5.85	5.07	5.47
14	DHARWAD	5.86	6.32	6.08	9.22	10.84	10.01
15	GADAG	4.12	1.72	2.97	3.74	3.20	3.48
16	GULBARGA	3.48	6.16	4.77	12.11	12.79	12.43
17	HASSAN	1.88	0.38	1.14	1.92	1.20	1.57
18	HAVERI	7.87	6.44	7.17	6.41	5.40	5.91
19	KODAGU	4.3	2.68	3.51	3.30	2.72	3.02
20	KOLAR	2.47	3.26	2.86	4.25	4.65	4.44

21	KOPPAL	10.24	11.05	10.62	12.29	12.14	12.22
22	MANDYA	1.84	1.81	1.82	1.62	1.90	1.75
23	MYSORE	2.24	2.12	2.18	3.08	3.31	3.19
24	RAICHUR	6.14	11.06	8.44	9.18	9.81	9.47
25	RAMANAGARA	2.15	2.02	2.08	3.42	2.95	3.19
26	SHIMOGA	6.89	5.46	6.2	3.86	3.23	3.55
27	TUMKUR	0	1.18	0.41	2.44	2.18	2.31
28	UDUPI	0.84	0.72	0.79	0.00	0.00	0.00
29	UTTARA KANNADA	4.39	2.58	3.53	3.03	2.89	2.96
30	YADGIRI	9.67	13	11.11	17.99	19.05	18.45
	Total	4.08	4.64	4.35	5.16	5.66	5.40

The Table shows district wise Dropout rate at Upper Primary Level. It is note that the marginally increases in the dropout rate at the upper primary level in the year 2012-13. However, the average dropout rate of 5.40% is also more than expected. The districts with high dropout rate at upper primary level are Yadgiri (18.45), Bidar (13.11), Gulberga(12.43), Koppal (12.22) and Bijapur (9.88).

TRANSITION RATES

Transition:-

- Enrolments in all management schools in 5th standard during 2011-12 was 1050329 with boys and girls break-up being 543906 and 506423 [U-DISE]. Enrolments in 6th standard in all management schools during 2012-13 is 10062137, of which, figures for boys and girls are 5221556 and 4840581 respectively. The transition rates from 5th of 2011-12 to 6th of 2012-13 for B/G/T are 94.96, 94.25 and 94.62 percent respectively.
- Transition rates in schools of the Department of Education are lower than that of all managements; it is noted that all management's data include Ashram schools (LPS) of Social Welfare Department as well as local bodies' schools apart from private unaided and aided schools.

All Management Transition Rate: Primary to Upper Primary level							
Sno	District	2011-12			2012-13		
		Boys	Girls	Total	Boys	Girls	Total
1	2	3	4	5	6	7	8
1	BAGALKOT	94.99	96.22	95.58	93.24	93.28	93.26
2	BANGALORE RURAL	100.69	101.55	101.10	98.39	98.04	98.22
3	BANGALORE URBAN	98.79	99.20	98.99	99.79	98.31	99.07
4	BELGAUM	100.13	100.49	100.30	97.14	96.64	96.90
5	BELLARY	94.84	96.51	95.64	90.90	89.40	90.17
6	BIDAR	90.28	91.10	90.68	85.48	86.30	85.88
7	BIJAPUR	88.53	86.05	87.35	87.63	86.90	87.28
8	CHAMARAJANAGARA	99.07	100.28	99.65	100.49	99.02	99.78
9	CHICKBALLAPUR	103.91	103.61	103.76	97.16	94.05	95.64
10	CHIKKAMANGALORE	99.77	99.98	99.87	100.28	98.87	99.60
11	CHITRADURGA	98.78	98.83	98.80	96.47	95.64	96.07
12	DAKSHINA KANNADA	100.65	100.55	100.60	100.46	99.77	100.12
13	DAVANAGERE	95.01	95.97	95.47	95.59	95.68	95.63
14	DHARWAD	96.90	95.38	96.15	90.77	89.07	89.94
15	GADAG	97.03	96.64	96.84	94.70	94.50	94.60
16	GULBARGA	97.12	95.91	96.54	89.36	87.08	88.27
17	HASSAN	99.00	99.18	99.09	97.43	99.09	98.24
18	HAVERI	97.10	96.21	96.66	94.49	96.66	95.54
19	KODAGU	101.08	97.25	99.21	99.36	97.87	98.65
20	KOLAR	98.49	97.86	98.18	94.97	96.49	95.71
21	KOPPAL	93.41	92.23	92.84	91.23	90.19	90.73
22	MANDYA	99.15	98.02	98.60	98.17	97.55	97.87
23	MYSORE	99.95	99.28	99.62	98.12	97.64	97.88
24	RAICHUR	91.36	88.52	90.01	90.41	90.14	90.28
25	RAMANAGARA	99.37	97.55	98.49	98.16	97.26	97.73
26	SHIMOGA	96.10	96.94	96.51	97.85	97.16	97.51
27	TUMKUR	101.56	98.64	100.17	98.53	97.74	98.15
28	UDUPI	102.42	100.49	101.48	101.69	100.13	100.93
29	UTTARA KANNADA	98.71	98.44	98.58	98.17	97.77	97.98
30	YADGIRI	88.38	83.45	86.10	84.46	80.93	82.82
	Total	97.09	96.66	96.88	94.96	94.25	94.62

Transition Rate (V to VI)			
Year	Boys	Girls	Total
2012-13	94.96	94.25	94.62
2011-12	97.09	96.66	96.88
2010-11	96.20	96.09	96.15
2009-10	85.53	84.41	84.98
2008-09	85.67	84.83	84.60

- The transition rate is one of the important indicators in elementary education. The indicator shows the percentage of children moving to the upper primary level (from grade V to VI). It is observed that a large number of students dropout from the system during this transition.

ENROLMENT INDICATORS across SOCIAL CATEGORIES

GER for SC / ST children has crossed 100 percent at primary level while it is below expectations at the upper primary level. The rates are 101.69, 104.5, 89.13 and 100.55 respectively. The same trend is observable even among Muslims.

NER for SC / ST are lower than that for general population. It is noted that the shortfalls in GER and NER are partially accounted for schooling exposures under the OOSC programmes.

Note: - In an examination, analysis and understanding of completion rates it needs to be noted that the systematic programme of collection of data through DISE began in 2005-06 while completion rates data go back to 2002-03.

TRANSITION RATES for Social Categories

Transition Rates for SC, ST and Muslims from primary to upper primary levels, 5th to 6th standard are 93.53, 88.14 and 92.05 percent respectively. It needs to be noted that sub-optimal transition and completion rates are partially accounted by the drop-out (retention) rates.

Classes	Total	SC	ST	Muslim
5th to 6th	94.62	93.53	88.14	92.05
7th to 8th	94.43	92.87	96.90	87.18

TEACHERS in the STATE

There are 204295 posts of sanctioned teachers in the schools of the DoE of the State. Teachers are not recruited separately for lower and upper primary stages of elementary education. Based on seniority and experience they are posted at the two stages. Teachers of the State have a minimum of +2 educations. Only trained teachers, 2 years of diploma / certificate, are recruited. The matrix of recruitment gives balanced weight age to Science,

Mathematics, Language and Humanities subjects studied by the teachers at the +2 stage, at the time of recruitment. This would facilitate subject competence for transactions with children at the upper primary stage. Districts are the levels of recruitment even though digital counseling is organized at the State level. There are no inter-district transfers as per the Civil Service Rules for teachers. Any rational deployment is possible only within the district. PTR for Sanctioned Teachers: of the 204295 sanctioned posts of teachers, 52786 and 151509 are located at lower and upper primary stages respectively. For the given load of 2892255 children in purely LPS and 1595094 children at the UPS which includes, by and large, a LPS feeder unit, and for the summated 4487349 students, the pupil-teacher ratios work out to be 13.75, 23.40, and 20.91. (In 2011-12-14.53, 23.87 and 21.49)

Notes:-

- State total includes teachers of SW / LB / Other schools.
- Posts in Aided schools are not filled up in time after retirements of existing teachers. They manage with contract teachers. This explains high PTR.
- Teachers of Govt. / Aided are qualified / trained as per NCTE norms. This is not the case with unaided schools. Hence Female teachers are in high proportion. Enforcement of RTE 2009 / NCTE norms in unaided schools may lead to conflict of interests.
- Total Sanctioned Teachers in DoE in Elementary stage is 204295. As such, 222872 posts are vacant. PTR ratio for WT in DoE is well within RTE norms. Individual schools may have problems.

District-wise PTR for Sanctioned Teachers

Sl. No	District	PTR for Sanctioned Post		
		LPS	HPS	Elementary
1	BAGALKOT	18.42	27.02	25.65
2	BANGALORE RURAL	10.24	18.04	14.99
3	BANGALORE URBAN	18.48	25.46	23.86
4	BELGAUM	14.93	26.41	24.13
5	BELLARY	18.43	29.01	27.05
6	BIDAR	16.47	23.85	22.36
7	BIJAPUR	17.68	29.62	27.18
8	CHAMARAJANAGARA	12.47	22.73	20.23
9	CHIKKABALLAPURA	10.96	19.82	16.11
10	CHIKKAMANGALORE	8.56	13.99	12.37
11	CHITRADURGA	12.40	21.10	18.85
12	DAKSHINA KANNADA	12.43	21.58	20.38
13	DAVANAGERE	14.49	21.80	19.96
14	DHARWAD	18.52	26.27	25.35

15	GADAG	18.61	25.65	24.64
16	GULBARGA	18.20	26.07	24.39
17	HASSAN	9.17	15.51	13.04
18	HAVERI	16.58	24.59	23.11
19	KODAGU	9.72	17.10	15.89
20	KOLAR	12.10	19.10	16.06
21	KOPPAL	21.62	28.04	26.84
22	MANDYA	11.24	19.42	16.82
23	MYSORE	12.86	22.78	19.96
24	RAICHUR	18.15	25.57	23.81
25	RAMANAGARA	9.98	16.47	13.63
26	SHIMOGA	11.20	17.99	16.01
27	TUMKUR	10.93	19.40	16.08
28	UDUPI	10.26	19.79	17.60
29	UTTARA KANNADA	10.04	17.96	15.39
30	YADAGIRI	24.22	30.73	29.15
Total		13.72	23.37	20.88

PTR for working Teachers :-

181423 teachers are working in the 60036 elementary schools of the State. The gap between sanctioned and working teachers is 22872, 11.20 percent. Recruitments under the State sector are continuous and right now teachers are being posted, keeping school-specific PTR in view. The PTR for working teachers at the LPS, UPS and total elementary cycles are 15.99 , 26.22 and 23.62 respectively. Proportion of women teachers in the State is are 54.92 and 48.08 percent respectively for all schools and for Department of Education schools.

District-wise PTR for Working Teachers:

Sl. No	District	PTR for Working Teacher		
		LPS	HPS	Elementary
1	BAGALKOT	20.96	31.16	29.52
2	BANGALORE RURAL	11.10	19.93	16.44
3	BANGALORE URBAN	19.39	26.88	25.16
4	BELGAUM	18.04	29.47	27.34
5	BELLARY	22.64	33.30	31.44
6	BIDAR	19.48	27.13	25.63
7	BIJAPUR	18.65	32.79	29.78
8	CHAMARAJANAGARA	14.89	25.36	22.94
9	CHIKKABALLAPURA	13.03	23.70	19.22
10	CHIKKAMANGALORE	9.45	15.30	13.57
11	CHITRADURGA	13.47	23.23	20.68
12	DAKSHINA KANNADA	15.66	25.10	23.95
13	DAVANAGERE	15.40	23.30	21.31
14	DHARWAD	19.70	27.79	26.84

15	GADAG	20.74	28.27	27.20
16	GULBARGA	21.11	30.58	28.53
17	HASSAN	10.20	17.28	14.52
18	HAVERI	17.51	26.07	24.48
19	KODAGU	12.53	19.75	18.66
20	KOLAR	12.47	20.12	16.75
21	KOPPAL	25.02	32.89	31.41
22	MANDYA	13.03	22.22	19.33
23	MYSORE	14.12	24.77	21.76
24	RAICHUR	23.12	30.38	28.75
25	RAMANAGARA	12.24	20.86	17.02
26	SHIMOGA	13.00	19.92	17.98
27	TUMKUR	11.78	21.36	17.55
28	UDUPI	12.06	21.64	19.56
29	UTTARA KANNADA	11.82	20.30	17.62
30	YADAGIRI	29.04	38.52	36.15
Total		15.56	26.25	23.51

Tally of Number of Teachers- Sanctioned and working at Elementary and High schools by Managements between 2006-07 and 2012-13

Management	Elementary school level	2006-07	2007-08	2008-09	2009-10	2010-11	2011-12	2012-13	Incr / Decr
DoE	Sanctioned posts	187788	193600	200,621	201,109	202,483	202,779	204,295	16,507
	Working	171473	180336	189,118	186,840	189,451	184,505	181,423	9,950
	Vacant	16315	13264	11503	14,269	13,032	18,274	22,872	6,557
	Percent Gap	8.69	6.85	5.73	7.1	6.44	9.01	11.20	3
SW + LB	Sanctioned posts	3013	2540	3,161	3,699	4,305	4,846	3,112	99
	Working	2547	2226	2,720	3,279	3,765	3,948	2,602	55
	Vacant	466	314	441	420	540	898	510	44
	Percent Gap	15.47	12.36	13.95	11.35	12.54	18.53	16.39	1
Aided	Sanctioned posts	19387	17883	19,464	20,401	21,291	20,746	21,160	1,773
	Working	16031	14586	15,236	16,521	17,229	16,693	17,150	1,119
	Vacant	3356	3297	4228	3,880	4,062	4,053	4,010	654
	Percent Gap	17.31	18.44	21.72	19.02	19.08	19.54	18.95	2
Total Sanctioned Teachers		210,188	214,023	223,246	225,209	228,079	228,371	228,567	18,379
Total Working Teachers		190,051	197,148	207,074	206,640	210,445	205,146	201,175	11,124
Total Vacant Teachers		20,137	16,875	16,172	18,569	17,634	23,225	27,392	7,255

Single Teacher Schools :-

There are 1465 schools which have reported as having only one teacher, 2.02 percent. 797 LPS out of these 1465 schools bear an enrolment which is less than 10 children in 05 standards. The sanctioned posts of (single) teachers have been relocated in other needy schools. Rest of the 777 schools carry enrolments of less than 20 children, on an average 15 children.

Initially, at the time of opening of schools in school less habitations, there was adequate strength and two teachers to begin with, in these schools. Over a period of time, due to reasons of deceleration of population growth rates, persistent failure of rains (droughts), migration for work, size of habitations declined, thereby resulting in low enrolments to schools. As per State policy for access to schooling and in the interests of economic efficiency (scale economy) one teacher was shifted to needy schools. That is how there are single teacher schools in the State. Alternative arrangements such as transport networked nodal schools with complete facilities are being proposed. Community acceptance and involvement is a significant factor in this process where in kids of 6,7,8,9 and 10 years of age are involved.

All Management %age of Schools with Single Teacher Schools:							
Sno	District	2011-12			2012-13		
		Primary only schools	Upper Primary schools	All schools	Primary only schools	Upper Primary schools	All schools
1	2	3	4	5	6	7	8
1	BAGALKOT	0.98	0	0.35	1.73	0	0.63
2	BANGALORE RURAL	13.99	0	7.54	11.64	0	6.21
3	BANGALORE URBAN	4.82	0	1.17	7.91	0	1.88
4	BELGAUM	2.24	0	0.9	0.00	0	0.00
5	BELLARY	0.57	0	0.21	1.04	0	0.41
6	BIDAR	0.14	0	0.05	0.00	0	0.00
7	BIJAPUR	1.83	0	0.81	2.30	0	1.09
8	CHAMARAJANAGARA	1.88	0	0.82	1.43	0	0.62
9	CHICKBALLAPUR	12.01	0	7.01	3.36	0	1.89
10	CHIKKAMANGALORE	10.03	0	5.04	6.77	0	3.27
11	CHITRADURGA	4.17	0	1.84	3.71	0	1.65
12	DAKSHINA KANNADA	1.41	0	0.34	1.43	0	0.34
13	DAVANAGERE	1.47	0	0.63	0.63	0	0.26
14	DHARWAD	8.24	0	2.42	0.00	0	0.00
15	GADAG	3.19	0	0.97	2.70	0	0.82
16	GULBARGA	0.68	0	0.27	0.44	0	0.18
17	HASSAN	12.55	0	6.92	8.23	0	4.34

18	HAVERI	1.41	0	0.55	0.88	0	0.34
19	KODAGU	1.9	0	0.56	2.55	0	0.74
20	KOLAR	10.52	0	6.1	10.70	0	6.19
21	KOPPAL	0.2	0	0.08	0.20	0	0.08
22	MANDYA	25.31	0	12.37	18.24	0	8.50
23	MYSORE	0	0	0	1.20	0	0.50
24	RAICHUR	0	0	0	0.56	0	0.25
25	RAMANAGARA	14.18	0	8.57	8.69	0	5.17
26	SHIMOGA	7.95	0	3.61	0.48	0	0.22
27	TUMKUR	14.28	0	8.26	10.95	0	6.17
28	UDUPI	1.05	0	0.31	1.46	0	0.42
29	UTTARA KANNADA	5.06	0	2.61	4.74	0	2.39
30	YADGIRI	0.54	0	0.26	0.17	0	0.08
Total		6.78	0	2.97	4.66	0	2.02

Schools with adverse PTR (Govt schools)

Though the State has a satisfactory PTR, Primary 4.37 and Upper Primary is 6.48, it is pertinent to mention here that the State has good number of schools with adverse PTR, as presented in the table below:

Sl. No.	District	% of Primary Schools Having More than 30 PTR	% of Upper Primary Schools Having More than 35 PTR
1	YADAGIRI	8.19	15.57
2	RAICHUR	4.39	5.51
3	KOPPAL	3.55	2.98
4	BANGALORE URBAN	3.24	4.22
5	BELLARY	2.87	7.54
6	BIJAPUR	2.17	9.32

Percentage of schools with adverse PTR (Govt. schools)

Sl. No	District Name	Primary			Upper Primary		
		Total no of Schools	Total No of Primary Schools having PTR > 30	% of Schools	Total no of Schools	Total No of Upper Primary Schools having PTR > 35	% of Schools
1	BAGALKOT	489	7	1.43	823	16	1.94
2	BANGALORE RURAL	681	0	0.00	439	2	0.46
3	BANGALORE URBAN	679	22	3.24	711	30	4.22
4	BELGAUM	1,383	18	1.30	1,871	103	5.51
5	BELLARY	523	15	2.87	835	63	7.54
6	BIDAR	537	13	2.42	731	21	2.87
7	BIJAPUR	831	18	2.17	1,051	98	9.32
8	CHAMARAJANAGARA	351	2	0.57	412	4	0.97
9	CHIKKABALLAPURA	974	3	0.31	535	9	1.68
10	CHIKKAMANGALORE	748	0	0.00	682	0	0.00
11	CHITRADURGA	819	1	0.12	866	5	0.58
12	DAKSHINA KANNADA	276	0	0.00	653	0	0.00
13	DAVANAGERE	650	3	0.46	704	3	0.43
14	DHARWAD	223	5	2.24	545	20	3.67
15	GADAG	178	1	0.56	438	10	2.28
16	GULBARGA	799	14	1.75	1,003	34	3.39
17	HASSAN	1,390	0	0.00	998	1	0.10
18	HAVERI	458	6	1.31	705	10	1.42
19	KODAGU	140	0	0.00	263	0	0.00
20	KOLAR	1,235	3	0.24	630	13	2.06
21	KOPPAL	394	14	3.55	571	17	2.98
22	MANDYA	917	0	0.00	827	2	0.24
23	MYSORE	965	0	0.00	961	12	1.25
24	RAICHUR	706	31	4.39	781	43	5.51
25	RAMANAGARA	885	0	0.00	449	1	0.22
26	SHIMOGA	946	0	0.00	936	2	0.21
27	TUMKUR	2,091	1	0.05	1,319	0	0.00
28	UDUPI	249	0	0.00	363	1	0.28
29	UTTARA KANNADA	1,124	3	0.27	996	3	0.30
30	YADAGIRI	464	38	8.19	469	73	15.57
Total		22,105	218	0.99	22,567	596	2.64

% Schools with adverse Student-Classroom Ratio (SCR): 2012-13- (Govt. Schools)							
Sl. No	District Name	Primary			Upper Primary		
		Total no of Schools	Total No of Schools having SCR>30	% of Schools	Total no of Schools	Total No of Schools having SCR>35	% of Schools
1	BAGALKOT	489	0	0.00	823	5	0.61
2	BANGALORE RURAL	681	0	0.00	439	2	0.46
3	BANGALORE URBAN	679	8	1.18	711	11	1.55
4	BELGAUM	1383	7	0.51	1871	18	0.96
5	BELLARY	523	6	1.15	835	21	2.51
6	BIDAR	537	3	0.56	731	5	0.68
7	BIJAPUR	831	3	0.36	1051	7	0.67
8	CHAMARAJANAGARA	351	0	0.00	412	6	1.46
9	CHIKKABALLAPURA	974	2	0.21	535	4	0.75
10	CHIKKAMANGALORE	748	0	0.00	682	0	0.00
11	CHITRADURGA	819	0	0.00	866	3	0.35
12	DAKSHINA KANNADA	276	0	0.00	653	0	0.00
13	DAVANAGERE	650	0	0.00	704	2	0.28
14	DHARWAD	223	1	0.45	545	7	1.28
15	GADAG	178	0	0.00	438	3	0.68
16	GULBARGA	799	3	0.38	1003	18	1.79
17	HASSAN	1390	0	0.00	998	1	0.10
18	HAVERI	458	1	0.22	705	2	0.28
19	KODAGU	140	0	0.00	263	0	0.00
20	KOLAR	1235	0	0.00	630	1	0.16
21	KOPPAL	394	4	1.02	571	11	1.93
22	MANDYA	917	0	0.00	827	2	0.24
23	MYSORE	965	1	0.10	961	5	0.52
24	RAICHUR	706	14	1.98	781	28	3.59
25	RAMANAGARA	885	0	0.00	449	1	0.22
26	SHIMOGA	946	0	0.00	936	0	0.00
27	TUMKUR	2091	0	0.00	1319	4	0.30
28	UDUPI	249	0	0.00	363	1	0.28
29	UTTARA KANNADA	1124	0	0.00	996	2	0.20
30	YADAGIRI	464	10	2.16	469	37	7.89
Total		22105	63	0.29	22567	207	0.92

The SCR at District and State level is comfortable (22). Even though, there are number of schools with Adverse Student Classroom Ratios. The percentage of schools with SCR>35 is 2 at Primary and 4% at Upper Primary level. District wise adverse SCR is as follows:

No of Schools not Having Facilities - Education Department Schools

Sl.No	District	Schools	Boys Toilet	Girls Toilet	Electricity	Play Ground	Ramps	Library	Compound Wall	Drinking Water
1	2	3	4	5	6	7	8	9	10	11
1	BAGALKOT	1,312	0	0	0	466	56	0	246	0
2	BANGALORE RURAL	1,120	0	0	10	680	354	10	226	1
3	BANGALORE URBAN	1,390	12	0	0	716	386	0	291	0
4	BELGAUM	3,254	0	0	0	1,060	370	36	1,005	0
5	BELLARY	1,358	0	7	0	765	184	0	451	0
6	BIDAR	1,268	0	0	0	378	0	0	512	0
7	BIJAPUR	1,882	0	0	34	527	3	3	952	2
8	CHAMARAJANAGARA	763	0	0	43	453	260	1	187	0
9	CHIKKABALLAPURA	1,509	0	0	9	879	791	1	530	0
10	CHIKKAMANGALORE	1,430	3	3	6	476	765	13	273	0
11	CHITRADURGA	1,685	0	0	0	781	7	14	526	0
12	DAKSHINA KANNADA	929	0	0	0	119	0	0	87	0
13	DAVANAGERE	1354	0	0	0	619	130	1	231	0
14	DHARWAD	768	0	0	0	268	0	0	228	0
15	GADAG	616	0	0	0	170	34	3	78	0
16	GULBARGA	1802	0	0	0	886	0	0	669	0
17	HASSAN	2388	0	0	0	1195	1035	0	573	0
18	HAVERI	1163	0	0	0	490	105	0	280	0
19	KODAGU	403	0	0	3	75	0	1	29	0
20	KOLAR	1865	0	0	2	870	181	0	505	0
21	KOPPAL	965	108	33	36	382	141	34	228	32
22	MANDYA	1744	0	0	0	883	170	6	245	0
23	MYSORE	1926	0	0	20	1049	379	0	179	0
24	RAICHUR	1487	0	0	2	730	455	85	552	0
25	RAMANAGARA	1334	0	0	4	771	559	1	437	0
26	SHIMOGA	1882	0	0	0	772	722	0	195	0
27	TUMKUR	3410	1	0	3	1963	1559	0	806	0
28	UDUPI	612	0	0	18	167	0	0	299	0
29	UTTARA KANNADA	2120	0	0	5	670	364	2	547	0
30	YADAGIRI	933	2	0	0	513	0	79	481	0
Total		44,672	126	43	195	19,773	9,010	290	11,848	35

RTE Infrastructure Compliant Schools												
Sl. No.	District	Total No of Elementary Schools	No of Schools based on the No of facility having in Schools as per RTE									% of Schools having all 9 facility
			9	8	7	6	5	4	3	2	1	
1	BANGALORE RURAL	1,120	292	448	286	88	5	1	0	0	0	26.07
2	BANGALORE URBAN	1,390	387	488	348	140	22	5	0	0	0	27.84
3	CHIKKABALLAPURA	1,509	210	537	543	213	6	0	0	0	0	13.92
4	CHITRADURGA	1,685	593	783	285	23	1	0	0	0	0	35.19
5	DAVANAGERE	1,354	580	538	194	39	3	0	0	0	0	42.84
6	KOLAR	1,865	722	721	374	45	3	0	0	0	0	38.71
7	RAMANAGARA	1,334	249	529	400	154	2	0	0	0	0	18.67
8	SHIMOGA	1,882	691	733	394	63	1	0	0	0	0	36.72
9	TUMKUR	3,410	705	1,326	1,057	316	5	1	0	0	0	20.67
10	BANGALORE	15,549	4,166	6,079	4,255	1,219	76	5	2	0	0	26.79
11	BAGALKOT	1,312	587	440	235	46	4	0	0	0	0	44.74
12	BELGAUM	3,254	1,222	1,150	663	186	30	3	1	0	0	37.55
13	BIJAPUR	1,882	465	855	454	87	21	0	0	0	0	24.71
14	DHARWAD	768	300	261	163	35	9	0	0	0	0	39.06
15	GADAG	616	346	183	64	19	4	0	0	0	0	56.17
16	HAVERI	1,163	456	448	207	48	4	0	0	0	0	39.21
17	UTTARA KANNADA	2,120	925	817	305	69	4	0	0	0	0	43.63
18	BELGAUM	11,115	3,915	4,108	2,306	656	148	11	2	0	1	35.22
19	BELLARY	1,358	258	516	388	158	34	4	0	0	0	19.00
20	BIDAR	1,268	485	512	236	28	7	0	0	0	0	38.25
21	GULBARGA	1,802	536	707	468	76	15	0	0	0	0	29.74
22	KOPPAL	965	260	339	244	81	28	11	2	0	0	26.94
23	RAICHUR	1,487	260	480	423	244	67	12	1	0	0	17.48
24	YADAGIRI	933	122	289	315	157	47	3	0	0	0	13.08
25	GULBARGA	7,813	1,421	2,729	2,364	885	322	79	24	10	1	18.19
26	CHAMARAJANAGARA	763	176	291	213	72	10	1	0	0	0	23.07
27	CHIKKAMANGALORE	1,430	423	564	354	87	2	0	0	0	0	29.58
28	DAKSHINA KANNADA	929	719	187	23	0	0	0	0	0	0	77.40
29	HASSAN	2,388	627	899	648	213	1	0	0	0	0	26.26
30	KODAGU	403	299	91	13	0	0	0	0	0	0	74.19
31	MANDYA	1,744	690	805	223	20	4	2	0	0	0	39.56
32	MYSORE	1,926	641	867	330	69	19	0	0	0	0	33.28
33	UDUPI	612	235	271	106	0	0	0	0	0	0	38.40
34	MYSORE	10,195	3,400	4,239	2,151	580	46	0	0	0	0	33.35
Total		44,672	12,902	17,155	11,076	3,340	592	95	28	10	2	28.88

EDI - Over All Index of Elementary Schools 2012-13

Sl.No.	District Name	Primary		Upper Primary		EDI Rank	
		Index	Rank	Index	Rank	Index	Rank
Weightage		1.79683		1.79683		3.59366	
1	BAGALKOT	0.63627	20	0.63940	20	0.63783	20
2	BANGALORE RURAL	0.71020	12	0.70876	13	0.70948	14
3	BANGALORE URBAN	0.61421	24	0.53711	29	0.57566	27
4	BELGAUM	0.65534	19	0.62928	21	0.64231	19
5	BELLARY	0.61363	25	0.59077	25	0.60220	24
6	BIDAR	0.61603	23	0.57116	26	0.59359	25
7	BIJAPUR	0.55566	28	0.56823	27	0.56195	28
8	CHAMARAJANAGARA	0.66589	17	0.60407	24	0.63498	21
9	CHIKKABALLAPURA	0.72129	11	0.73270	10	0.72699	9
10	CHIKKAMANGALORE	0.79568	2	0.84082	1	0.81825	1
11	CHITRADURGA	0.72589	9	0.76925	6	0.74757	8
12	DAKSHINA KANNADA	0.70798	13	0.71188	11	0.70993	13
13	DAVANAGERE	0.69990	15	0.70996	12	0.70493	15
14	DHARWAD	0.62098	22	0.55419	28	0.58759	26
15	GADAG	0.63513	21	0.65315	18	0.64414	18
16	GULBARGA	0.56843	27	0.65285	19	0.61064	23
17	HASSAN	0.79190	3	0.75574	8	0.77382	5
18	HAVERI	0.70341	14	0.74849	9	0.72595	10
19	KODAGU	0.81900	1	0.79836	2	0.80868	2
20	KOLAR	0.72980	8	0.76817	7	0.74899	7
21	KOPPAL	0.34890	30	0.41671	30	0.38281	30
22	MANDYA	0.66212	18	0.68693	15	0.67452	16
23	MYSORE	0.68522	16	0.60695	23	0.64609	17
24	RAICHUR	0.60391	26	0.66287	17	0.63339	22
25	RAMANAGARA	0.75700	6	0.66898	16	0.71299	11
26	SHIMOGA	0.76670	4	0.78821	4	0.77745	4
27	TUMKUR	0.75471	7	0.77156	5	0.76314	6
28	UDUPI	0.72299	10	0.70174	14	0.71237	12
29	UTTARA KANNADA	0.76476	5	0.79829	3	0.78152	3
30	YADAGIRI	0.48629	29	0.61646	22	0.55138	29

Source : DISE 2012-13

EDI - Over All Index of Primary Schools 2012-13

Sl.No.	District Name	Access		Infrastructure		Teacher		Outcome		EDI Rank	R
		Index	Rank	Index	Rank	Index	Rank	Index	Rank	Index	
Weightage		1.154818953		1.82481599		1.56526761		1.51367777		6.05858	
1	BAGALKOT	0.64685	12	0.86356	21	0.53132	27	0.46270	24	0.63627	20
2	BANGALORE RURAL	0.64685	12	0.93334	13	0.65850	14	0.54299	18	0.71020	12
3	BANGALORE URBAN	0.46510	21	0.80014	22	0.33552	30	0.79199	1	0.61421	24
4	BELGAUM	0.43388	23	0.86939	20	0.60029	20	0.62317	9	0.65534	19
5	BELLARY	0.45961	22	0.78359	24	0.63323	17	0.50596	21	0.61363	25
6	BIDAR	0.70129	10	0.79631	23	0.56737	24	0.38395	27	0.61603	23
7	BIJAPUR	0.60766	16	0.77405	26	0.44164	29	0.37062	28	0.55566	28
8	CHAMARAJANAGARA	0.28819	30	0.92795	14	0.65875	13	0.64549	7	0.66589	17
9	CHIKKABALLAPURA	0.83492	4	0.95470	11	0.58151	22	0.49774	22	0.72129	11
10	CHIKKAMANGALORE	0.92410	1	0.96269	8	0.62875	18	0.66896	4	0.79568	2
11	CHITRADURGA	0.62308	15	0.94853	12	0.66663	11	0.59721	13	0.72589	9
12	DAKSHINA KANNADA	0.40914	24	0.89438	18	0.72443	5	0.69424	3	0.70798	13
13	DAVANAGERE	0.39780	27	0.91282	15	0.78434	1	0.58639	14	0.69990	15
14	DHARWAD	0.54896	19	0.78060	25	0.74829	3	0.35185	29	0.62098	22
15	GADAG	0.34614	28	0.88960	19	0.70186	8	0.47982	23	0.63513	21
16	GULBARGA	0.64529	14	0.60407	29	0.62212	19	0.41130	26	0.56843	27
17	HASSAN	0.84614	3	0.99099	2	0.66102	12	0.64585	6	0.79190	3
18	HAVERI	0.71791	9	0.91240	16	0.54450	26	0.60474	12	0.70341	14
19	KODAGU	0.73879	7	1.00000	1	0.76396	2	0.71891	2	0.81900	1
20	KOLAR	0.77487	6	0.96174	10	0.57443	23	0.57648	15	0.72980	8
21	KOPPAL	0.30174	29	0.10915	30	0.58261	21	0.43225	25	0.34890	30
22	MANDYA	0.57422	17	0.97136	3	0.48813	28	0.53628	19	0.66212	18
23	MYSORE	0.40825	25	0.90119	17	0.68540	9	0.63599	8	0.68522	16
24	RAICHUR	0.53428	20	0.64342	28	0.68178	10	0.52887	20	0.60391	26
25	RAMANAGARA	0.66283	11	0.96984	4	0.71851	6	0.61208	11	0.75700	6
26	SHIMOGA	0.73373	8	0.96613	5	0.70562	7	0.61461	10	0.76670	4
27	TUMKUR	0.81205	5	0.96590	6	0.64679	16	0.56796	16	0.75471	7
28	UDUPI	0.40296	26	0.96566	7	0.74003	4	0.65698	5	0.72299	10
29	UTTARA KANNADA	0.88118	2	0.96228	9	0.65217	15	0.55425	17	0.76476	5
30	YADAGIRI	0.56519	18	0.67641	27	0.55480	25	0.12606	30	0.48629	29

Source : DISE 2012-13

EDI - Over All Index of Upper Primary Schools 2012-13

Sl.No.	District Name	Access		Infrastructure		Teacher		Outcome		EDI Rank	
		Index	Rank	Index	Rank	Index	Rank	Index	Rank	Index	Rank
Weightage		1.814501119		1.73010611		1.93243255		1.07054946		6.54759	
1	Bagalkot	0.60929	20	0.82798	16	0.58071	23	0.49159	25	0.63940	20
2	Bangalore North	0.69734	13	0.84573	14	0.66111	17	0.59279	6	0.70876	13
3	Bangalore Rural	0.44341	28	0.85040	13	0.31888	30	0.58357	8	0.53711	29
4	Bangalore South	0.61910	19	0.74186	23	0.53995	27	0.62585	2	0.62928	21
5	Belgaum	0.60739	21	0.64147	27	0.57880	24	0.50227	22	0.59077	25
6	Bellary	0.56922	25	0.68048	26	0.57614	25	0.38877	27	0.57116	26
7	Bidar	0.73993	10	0.43740	29	0.54192	26	0.53614	16	0.56823	27
8	Bijapur	0.51321	27	0.75784	21	0.68470	13	0.36403	28	0.60407	24
9	Chamaraja Nagar	0.79404	7	0.87592	12	0.64529	20	0.55509	13	0.73270	10
10	Chikkaballapur	0.94273	1	0.92835	4	0.84475	1	0.51951	20	0.84082	1
11	Chikkamagalore	0.76351	9	0.93595	2	0.72047	11	0.59765	5	0.76925	6
12	Chitradurga	0.65182	17	0.82487	17	0.78650	4	0.49637	24	0.71188	11
13	Dakshinakannada	0.59359	23	0.88959	9	0.73990	7	0.56287	12	0.70996	12
14	Davanagere	0.56001	26	0.35026	30	0.71542	12	0.58288	9	0.55419	28
15	Dharwad	0.60060	22	0.80308	19	0.61144	21	0.57521	11	0.65315	18
16	Gadag	0.72325	12	0.73982	24	0.59244	22	0.50202	23	0.65285	19
17	Gulbarga	0.85038	4	0.81737	18	0.77028	5	0.46948	26	0.75574	8
18	Hassan	0.80757	6	0.89929	8	0.65156	18	0.57963	10	0.74849	9
19	Haveri	0.89028	3	0.84544	15	0.81860	2	0.52993	19	0.79836	2
20	Kodagu	0.73599	11	0.93170	3	0.73892	8	0.61125	3	0.76817	7
21	Kolar	0.22149	30	0.49373	28	0.43557	29	0.58910	7	0.41671	30
22	koppal	0.69549	14	0.90522	7	0.66273	16	0.36332	29	0.68693	15
23	Mandya	0.31144	29	0.87719	11	0.64726	19	0.59835	4	0.60695	23
24	Mysore	0.57808	24	0.74532	22	0.67933	14	0.64363	1	0.66287	17
25	Raichur	0.65846	15	0.76972	20	0.80111	3	0.28552	30	0.66898	16
26	Ramanagara	0.83533	5	0.95349	1	0.73889	9	0.53024	18	0.78821	4
27	Shimoga	0.77810	8	0.92548	5	0.76763	6	0.51884	21	0.77156	5
28	Tumkur	0.65804	16	0.88307	10	0.67449	15	0.53197	17	0.70174	14
29	Udupi	0.90249	2	0.91972	6	0.73422	10	0.54107	15	0.79829	3
30	Uttarakannada	0.62751	18	0.73421	25	0.53584	28	0.55299	14	0.61646	22

Source : DISE 2012-13

ACCESS

As per Right to Education Act – 2009, the state has notified the RTE rules and accordingly it is mandatory for the state to provide access to schooling facility to every child within the neighbourhood norms. The neighbourhood has been defined as follows :

Primary schools : -

In respect of children in classes I – V, a school shall be established normally within a walking distance of one km of the neighbourhood.

Upper Primary schools : -

In respect of children in classes VI-VII, a school shall be established normally within a walking distance of 3 k.m of the neighbourhood.

In case of urban areas where local authorities are City Corporations, the area of neighbourhood shall be the area of ward notified for the purpose of governance of local authority.

As such, the school mapping exercise to identify the availability of Government, Government aided and Private(unaided schools) in the neighbourhood of each habitation in both Rural and Urban areas has been undertaken by every district. Through this exercise, the need for opening of new schools, upgradation of schools, provision of transportation and escort facilities, the requirement of teachers at Primary and Upper Primary level in respect to Pupil-teacher ratio and the existing vacancies against sanctioned posts has also been identified and requirement of teachers is placed by the districts.

HABITATIONS AND ACCESS (Primary)

During the year 2012-13, 60888 habitations were identified and no new habitations have been notified during the year 2013-14. Total number of habitations covered by Primary schools in 2013-14 is 59080 as compared to 58253 during 2012-13. Thus there is an improvement in providing of access facility to primary schools. (827 habitations) during the current year. Out of the remaining 1808 habitations, 4 habitations (2 habitations in Mysore and 2 habitations in Gulbarga district) are eligible for opening of new schools. Therefore 4 Kannada medium schools (2new schools in Gulbarga district and shifting of 2 schools in Mysore district) are proposed. One urdu medium school in Dharwad district is proposed with the objective of achieving social access.

Districtwise list of total number of habitations and habitations covered / uncovered by Primary Schools.

S. No.	District	Total Habitations	Habitations Covered by Primary School*	Habitations without Primary School	Habitations without Primary Schools				
					Habitations eligible for PS*	No. of Children in such (Col. 6) habitations	that cannot be provided PS as per neighbourhood	Children attending school in such Habitations	School Children in such Habitations
1	BAGALKOT	1340	1340	0	0	0	0	0	0
2	BANGALORE RURAL	1298	1259	39	0	0	39	70	0
3	BANGALORE URBAN	990	990	0	0	0	0	0	0
4	BELGAUM	1942	1942	0	0	0	0	0	0
5	BELLARY	1034	1034	0	0	0	0	0	0
6	BIDAR	960	960	0	0	0	0	0	0
7	BIJAPUR	1614	1597	17	0	0	17	405	0
8	CHAMARAJAN AGARA	1031	959	72	0	0	72	237	20
9	CHICKBALLAPUR	2045	2045	0	0	0	0	0	0
10	CHIKKAMANGALORE	4514	4270	244	0	0	244	74	0
11	CHITRADURGA	1799	1799	0	0	0	0	0	0
12	DAKSHINA KANNADA	1734	1734	0	0	0	0	0	0
13	DAVANAGERE	1288	1271	17	0	0	0	0	0
14	DHARWAD	542	542	0	0	25	0	0	0
15	GADAG	564	564	0	0	0	0	0	0
16	GULBARGA	1889	1887	2	2	71	0	0	0
17	HASSAN	3470	3245	225	0	0	225	327	0
18	HAVERI	988	988	0	0	0	0	0	0
19	KODAGU	721	715	6	0	0	6	35	0
20	KOLAR	2783	2783	0	0	0	0	0	0
21	KOPPAL	789	789	0	0	0	0	0	0
22	MANDYA	2351	2291	60	0	0	21	43	0
23	MYSORE	2033	2020	13	2	116	1	190	0
24	RAICHUR	1434	1420	14	0	0	0	0	0
25	RAMANAGAR	2305	2305	0	0	0	0	0	0
26	SHIMOGA	5284	5235	49	0	0	49	202	0
27	TUMKUR	4417	4307	110	0	0	0	534	0
28	UDUPI	2406	2338	68	0	0	68	422	0
29	UTTARA KANNADA	6186	5317	869	0	0	913	626	0
30	YADGIRI	1137	1134	3	0	0	3	0	0
TOTAL		60888	59080	1808	4	212	1658	3165	20

Source : District data (AWP/B- 2013-14)

List of district wise variations in the number of habitations covered by Primary schools during 2012-13 and 2013-14 with reasons are given below:

S. No.	District	Total Habitations	Habitations Covered by Primary Schools (2012-13)	Habitations Covered by Primary Schools (2013-14)	Difference in number of habitations compared to 2012-13	Reasons for variations in number of habitations
1	2	3		4	5	6
1	BIJAPUR	1614	1614	1597	-17	Transportation facility for 405 children is proposed. Proposed new school in 2012-13 but not approved. Habitations are sparsely populated, so transportation required
2	CHIKKAMANGALORE	4514	3073	4270	1197	School mapping has been done and found that there are schools as per neighbourhood norms. However in 244 habitations, children are enrolled in neighbourhood schools within radius of 1 k.m.
3	DAVANAGERE	1288	1288	1271	-17	17 habitations have 21 schools which are temporarily closed due to lack of enrolment. The schools will be re-opened if there is enrolment
4	GULBARGA	1889	1889	1887	-2	2 habitations are eligible for opening of new schools. 2 new schools are proposed.
5	HASSAN	3470	3424	3245	-179	121 schools are temporarily closed. Transportation facility proposed for 327 children
6	MANDYA	2351	2338	2291	-47	44 schools are merged and 16 schools are closed.
7	MYSORE	2033	2030	2020	-10	10 schools temporarily closed, 10 schools are proposed to shift. Transportation for 190 children proposed
8	RAMANAGARA	2305	2293	2305	12	School mapping has been done and found that there are schools as per neighbourhood norms.
9	TUMKUR	4417	4417	4307	-110	Schools are closed temporarily

Source : District data (AWP/B- 2013-14)

Proposal for opening of New schools

Total 5 new schools i.e., opening of 2 new Kannada medium schools in Gulbarga district, shifting of 2 Kannada medium schools in Mysore district and opening of 1 new Urdu medium school in Dharwad district are proposed.

The consolidated district wise details of the proposal is listed below:

Sl. No	District	Block	Medium	Reason for which the school is Proposed	No. of children expected to enroll	Confirmation of availability of land
1	Gulbarga	Afzalpur	Kannada	<u>Eligible habitation to open new school :</u> Proposal to open new school in Karajagi habitation due to rehabilitation centre in Kodignur new extension due to Bhima bridge. Nearest school is 3.5 k.m	35	Government Land is available and concerned Gram Panchayat has given undertaking that they will provide the Land for the construction of forthcoming school.
		Aland	Kannada	<u>Eligible habitation to open new school:</u> Proposal to open new school in Koralli Tanda since Ashrama school running by SWD will be closed	36	SWD has given in writing that education department has to open the new school. The Ashrama school is a well equipped building and district officials have agreed to hand over the building.

2	Mysore	Hunsur	Kannada	<u>Shifting of school:</u> Bunde Basthara habitation is not having school. It is proposed to shift GLPS, Shivaji Nagar to Bunde Besthara Habitation	43	Building belonging to BCM department will be used temporarily. until permanent building is constructed.
		Hunsur	Kannada	<u>Shifting of school:</u> School run by BCM in Bijapura colony is closed. It is proposed to shift GLPS, Marura Kaval to Bijapur colony	73	Site is available.
3	Dharwad	Shashivala of Navalgund	Urdu	<u>SOCIAL ACCESS:</u> Since Hubli city has muslim population and nearest Urdu school is at a distance of 10 k.m, there is a need for opening of an urdu LPS.	25	Site is available. RTC submitted.

Source : District data (AWP/B- 2013-14)

The details given by the districts including school mapping is listed below:

1. Gulbarga

ANNEXURE
NEW SCHOOL PROPOSED 2013-14

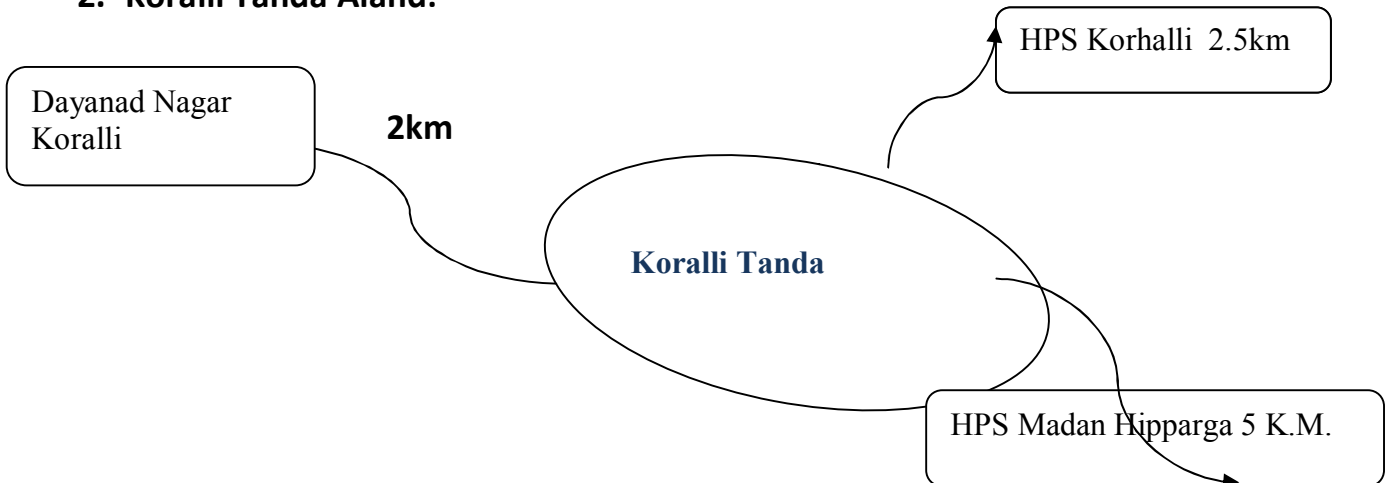
Sl. No.	Name of the Block	Habitation	CRC	Nearest LPS	Expected Enrolment	Medium	Reason	Site Available	Proposed New School
1	AFZALPUR	KODIGNUR NEW EXTN.	KARAJAGI	OLD HPS KODIGNOOR 29040206201 GLPS VKG KOGNOOR 29040206203	35	KAN	REHABILITATION CENTER	YES	YES
2	ALAND	KORALLI TANDA	KORALLI	HPS DAYANAND NAGAR KORALLI 29040107306 MORISAB	36	KAN	S.W. DEPT. WANTED TO CLOSE THE ASHRAM SHALE 29040107305	YES	YES

New School Mapping of GULBARGA District

1. Kodiganoor New Extn. Afzalpur :



2. Koralli Tanda Aland:



Justification :

- Among 2 proposed habitations mentioned in above table the in Afzalpur block **Kodignur** new extention is the rehabilitation center due to Bhima bridge cum barrage. In this habitation 48 families are living and there are

35 children of the age group 6-14 are available. For this habitation the nearest habitation is Kodiganur it is of 3.5 K.M. away from this habitation. Already Government Land is available and concerned Gram Panchat has given undertaking that they will provide the Land for the construction of forthcoming school.

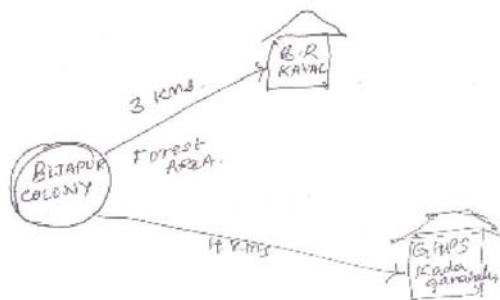
- In Koralli Tanda of Aland Block already Social Welfare department is running Ashram School. But Now they wanted to close this school because of teachers. And they have given in writing that education department has to open the new school. Already this school is having well equipped building, we have requested District officials to hand over the building. They have agreed. In this Tanda there are 100 families are living and 36 children are of age group 6-14. If the school is closed they have to walk near by habitation Dayanand Nagar Korali it is of 2 K.m. So as per the norms we are planned to open New school in this habitation using available social welfare building. Only we are asking required teachers under this plan.

2. Mysore

Status of school mapping

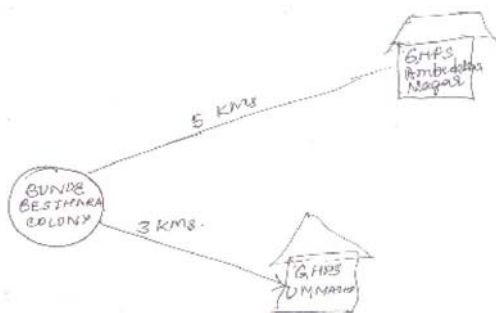
Out of which in two habitations Bijapura Colony and Bunde besthara Colony in hunsur block are identified as habitat without schools in 1 km distance. About 140 families are migrated to Bijapura colony from Bijapura District. Hence 73 children will be enrolled from this habitation to the new Schools. In Bijapur Colony 73 children are already identified. They are travelling to nearby school at B R Kaval which is 3 Kms and the is inconvenient for travelling because of no road network and forest area. Hence it is very important to open new school at Bijapur Colony. In this matter district level

and block level officers have inspected the areas and suggested to open new schools.



Bijapura colony Mapping

A school established from the BCM Department was closed in the year 2012-13 in Bunde besthara Colony in Hunsur Block. About 43 Students of 1 to 5th class have to travel for 2-3 Kms for schooling to GHPS Ummthuru which is nearby to the Habitation. And in this regard the community and the concerned BEO have made the letter correspondence to this office.



Bunde Besthara colony Mapping

After confirming the availability of site for the colony construction of new school building in Bijapura Colony and Bunde Besthara colony, new buildings for schools is proposed in this habitation and shifting teacher posts by closed schools into new schools. In Bunde Besthara Colony to start new school constructed School building is available which belongs to BCM department and correspondence for the handover of building is made.

Two Schools in Hunsur block, GLPS Shivaji Nagar and GLPS Marura Kaval are closed since 3 years, hence schools are shifted to Bunde Besthara colony and

Bijapura Hadi along with teacher post. New buildings, School grant, TLE grant is proposed.

Proposal for shifting schools : It is proposed to plan for shifting of 2 schools (Hunsur-2) in school less habitation. Physical barriers, distance from existing school has been kept in mind while opening new schools..

Block	Habitation	Nearest Upper Primary school	DISE CODE	Distance from the habitation	Reason for asking new schools
Hunsur	Bijapura colony	GHPS, B R Kaval	29260401901	3 Kms	This habitations is not provided with school. ,
	Bunde Besthara Colony	GHPS, Ummathru	29260401901	3 Kms	One school managed by BCM was closed in 2012-13, hence school is proposed.

S. No.	Name of District	Habitations	No. of children living in unserved habitations but enrolled in far away schools				
			Boys	Girls	SC	ST	Muslim
1	Mysore	Bijapura colony	48	25	0	73	00
2		Bunde Besthara Colony	25	18	0	43	0

3. Dharwad :

For the Social access, there is a need to provide access. The Sasvihalli of Navalgund block has 25 Muslim children 13 of age group 6-10. The habitation is already having the kannada HPS school (29090504601 -- HPS SASWIHALLI).

The detail of the proposed school is as follows:

Sl.No	Block	Village	Medium	Boys	Girls	Total	Distance of nearest Urdu School in KM
1	Navalgund	Sasvihalli	Urdu	13	12	25	29090505910 --HPUBS ANNIGERI 8 K.M OR 29090502303 -- HPUBS HALLIKERI IS NEAREST URDU SCHOOL. 10 K.M

SPECIAL FOCUS DISTRICTS

Diversity is the hallmark of Indian society. This is true of educational scenario. There are 3 districts in the state. Bidar, Dakshina Kannada, Gulbarga which have a high and significant minority (Muslims) population. Incidentally Bidar – Gulbarga districts are also in the north eastern belt of the state which constitutes most backward region. The Gulbarga district was split-up into 2 revenue districts during 2009-10. Dakshina kannada district is a prosperous district with minorities as one of the major chunk of population.

Likewise the Kolar district population is dominated by SC. This is also a district that records perennially low rainfall enjoys more dry spell in the year. Similar is the case with Chikkaballapura district which was carved out of Kolar district during 2008-09 as it constituted a highly backward region of a backward district. Education growth in this region has been bit slow over the years. There is a disparity between the number of primary schools and the upper primary schools. During 2009-10 the ratio was more than 3:1 With SSA support and other government initiatives the district reports a ratio of 1:1.38 for lower primary to upper primary schools.

DISE reports reveal that the retention rate in Bangalore rural was less than 60%. A follow up process reveals that the earlier reporting was a mistake. The corrected figure shows a retention rate of over 95% in the district and across all the taluks. Hence the district does not come under the SFD category.

District wise Out of School Children 2013-14:

Sl. No.	District	Total		
		Boys	Girls	Total
1	BAGALKOTE	80	80	160
2	BANGALORE RURAL	59	44	103
3	BANGALORE URBAN	2129	1867	3996
4	BELGAUM	572	386	958
5	BELLARY	330	345	675
6	BIDAR	1157	722	1879
7	BIJAPUR	268	192	460
8	CHAMARAJANAGAR	472	386	858
9	CHIKKABALLAPUR	221	211	432
10	CHIKKAMAGALUR	204	198	402
11	CHITRDURGA	326	256	582
12	DAKSHINA KANNADA	76	56	132
13	DAVANGERE	481	432	913
14	DHARWAD	244	170	414
15	GADAG	694	610	1304
16	GULBARGA	770	807	1577
17	HASSAN	105	67	172
18	HAVERI	276	194	470
19	KODAGU	35	33	68
20	KOLAR	209	161	370
21	KOPPAL	944	1019	1963
22	MANDYA	76	22	98
23	MYSORE	583	348	931
24	RAICHUR	364	377	741
25	RAMANAGARA	75	29	104
26	SHIMOGA	258	140	398
27	TUMKUR	132	86	218
28	UDUPI	63	60	123
29	UTTAR KANNADA	66	34	100
30	YADAGIRI	1033	1107	2140
	Total	12302	10439	22741

Child updation of December, 2012 identified 22741 children in 7 to 13+ age group who are outside the school-net. Bangalore Urban, Yadagir, Koppal, Bidar, Gulbarga and Gadag constitute the backward districts of the State except Bangalore Urban. OOSC in these 6 districts add upto nearly 56.55 percent of the total OOSC in 34 educational districts [30 Revenue districts] of the State. Including OOSC children, continued from 2012-13, there are 49471 OOSC in State.

Drop-out rates and non-completion rates in these districts are also considerable, specifically in Gulbarga and Raichur districts. These rates are derived from DISE data collected from schools where record-management is continuous, systematic and dependable. However information on Drop-out children as collected from OOSC surveys are much lower than that of DISE figures. It is to be noted that child census figures are obtained from households. It is reported data.

Reasons for Drop-out phenomena as per Child Census :-

The DISE data, given its scale of collection and magnitude of variables, does not provide information on reasons for dropping out of children from schools. The child census exercise collects the reasons. As per the present survey, the prominent reasons are as follows.

Engagement in household work is a major reason for drop-out phenomenon. In a great majority of labourer households where both parents go out for work and livelihood, children, especially girls are expected to manage the households, service drinking water needs, clean the used utensils, wash clothes and in several cases take care of siblings. Residential Special training centres would definitely attract these children, given the poverty levels in rural households and urban slums.

Migration for work, is quite high in several districts, specifically in Bangalore Urban district. Tent schools have been proposed for such children.

AWP & B 2013-14 Proposed OOSC & Previous year dropouts

Sl. No.	Districts	Out of School Children (Fresh)			Previous year dropouts			Total		
		Centers	Children	Finance	Centers	Children	Finance	Centers	Children	Finance
1	BAGALKOTE	15	160	7.265	32	1636	97.300	47	1796	104.565
2	BANGALORE RURAL	0	103	1.920	6	205	11.010	6	308	12.930
3	RAMANAGARA	4	104	5.200	3	70	3.500	7	174	8.700
4	BANGALORE NORTH	94	1838	91.950	18	923	47.500	112	2761	139.450
5	BANGALORE SOUTH	138	2158	92.400	41	1563	72.120	179	3721	164.520
6	BELGAUM	56	361	21.420	2	75	10.750	58	436	32.170
7	CHIKKODI	98	597	17.390	14	350	10.500	112	947	27.890
8	BELLARY	48	675	29.450	74	1927	184.520	122	2602	213.970
9	BIDAR	65	1879	56.955	93	4231	254.650	158	6110	311.605
10	BIJAPUR	43	460	11.275	103	4437	328.250	146	4897	339.525
11	CHAMARAJANAGAR	16	858	40.310	2	73	3.650	18	931	43.960
12	CHIKKAMAGALUR	17	402	14.720	10	381	38.100	27	783	52.820
13	CHITRDURGA	223	582	8.730	5	153	9.180	228	735	17.910
14	DAKSHINA KANNADA	1	132	11.230	4	80	2.740	5	212	13.970
15	DAVANGERE	42	913	47.000	21	1268	78.170	63	2181	125.170
16	DHARWAD	16	414	15.325	7	266	16.200	23	680	31.525
17	GADAG	61	1304	31.950	0	0	0.000	61	1304	31.950
18	GULBARGA	31	1577	65.725	35	1903	95.150	66	3480	160.875
19	YADAGIRI	214	2140	74.875	16	736	36.800	230	2876	111.675
20	HASSAN	10	172	8.600	13	540	33.200	23	712	41.800
21	HAVERI	61	470	14.050	38	1231	104.800	99	1701	118.850
22	KODAGU	4	68	3.400	1	22	1.320	5	90	4.720
23	KOLAR	16	370	18.500	6	282	10.060	22	652	28.560
24	CHIKKABALLAPUR	26	432	9.525	8	341	17.050	34	773	26.575
25	KOPPAL	40	1963	89.900	34	1698	164.900	74	3661	254.800
26	MANDYA	9	98	3.185	3	92	4.600	12	190	7.785
27	MYSORE	65	931	52.395	18	1246	69.130	83	2177	121.525
28	RAICHUR	30	741	28.965	8	435	33.580	38	1176	62.545
29	SHIMOGA	44	398	13.845	9	154	7.700	53	552	21.545
30	TUMKUR	75	125	1.875	0	0	0.000	75	125	1.875
31	MADHUGIRI	32	93	1.955	3	68	3.400	35	161	5.355
32	UDUPI	25	123	4.575	0	0	0.000	25	123	4.575
33	UTTAR KANNADA	18	44	0.660	1	30	3.000	19	74	3.660
34	SIRSI	22	56	1.435	7	314	25.800	29	370	27.235
	Total	1659	22741	897.955	635	26730	1778.630	2294	49471	2676.585